

Handwritten musical score for four voices (Soprano, Alto, Tenor, Bass) in 3/4 time. The lyrics are: "Qui boyt et ne re boyt Il ne sctet que boy re soit". The score includes a key signature of one sharp (F#) and a common time signature of 3/4. Each voice part is marked with "etc." at the end of the phrase. The lyrics are written below the notes.

Qui boyt et ne re boyt Il ne sctet que boy re soit Qui...

Qui... Qui...

Qui... Qui...

Qui... Qui...

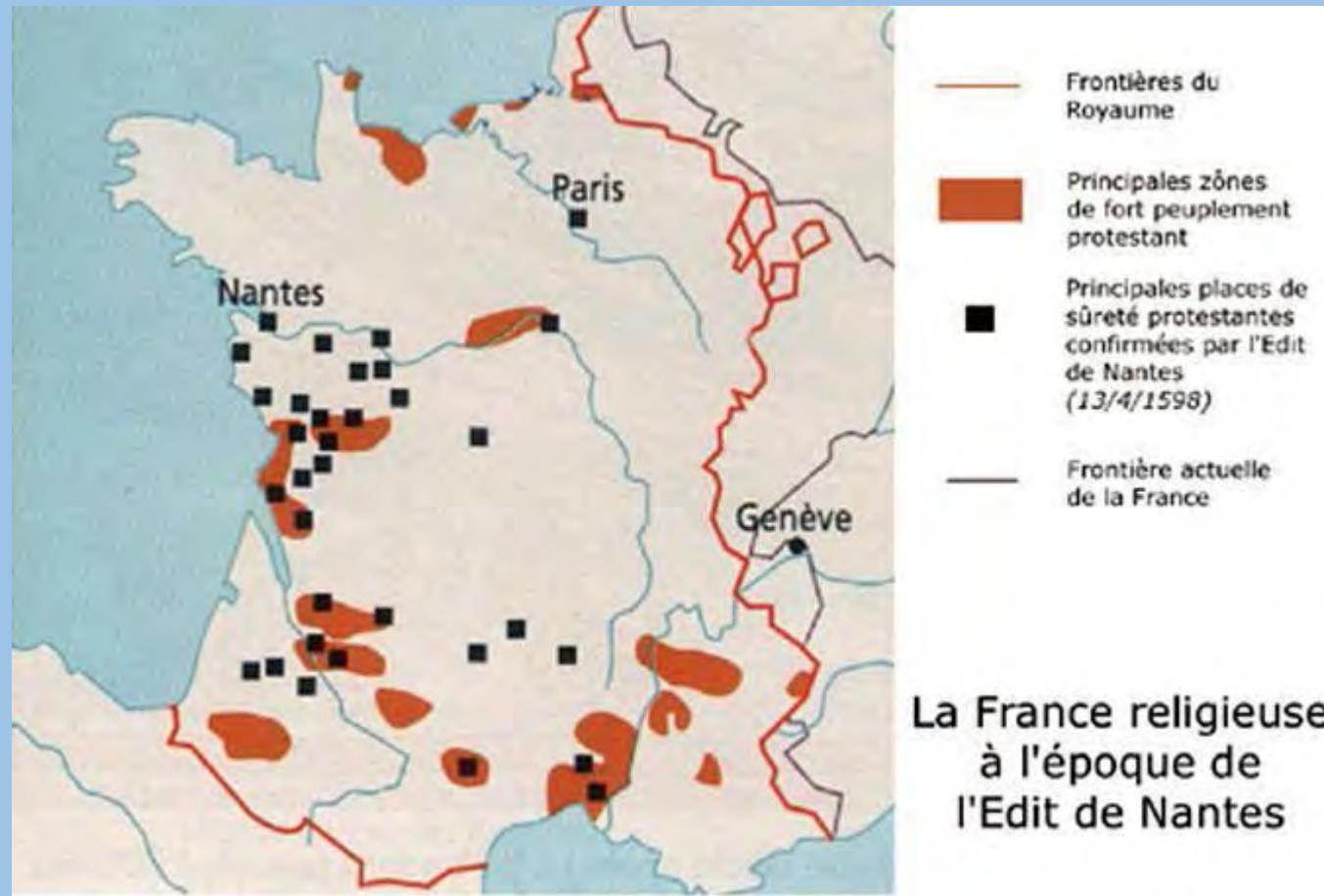


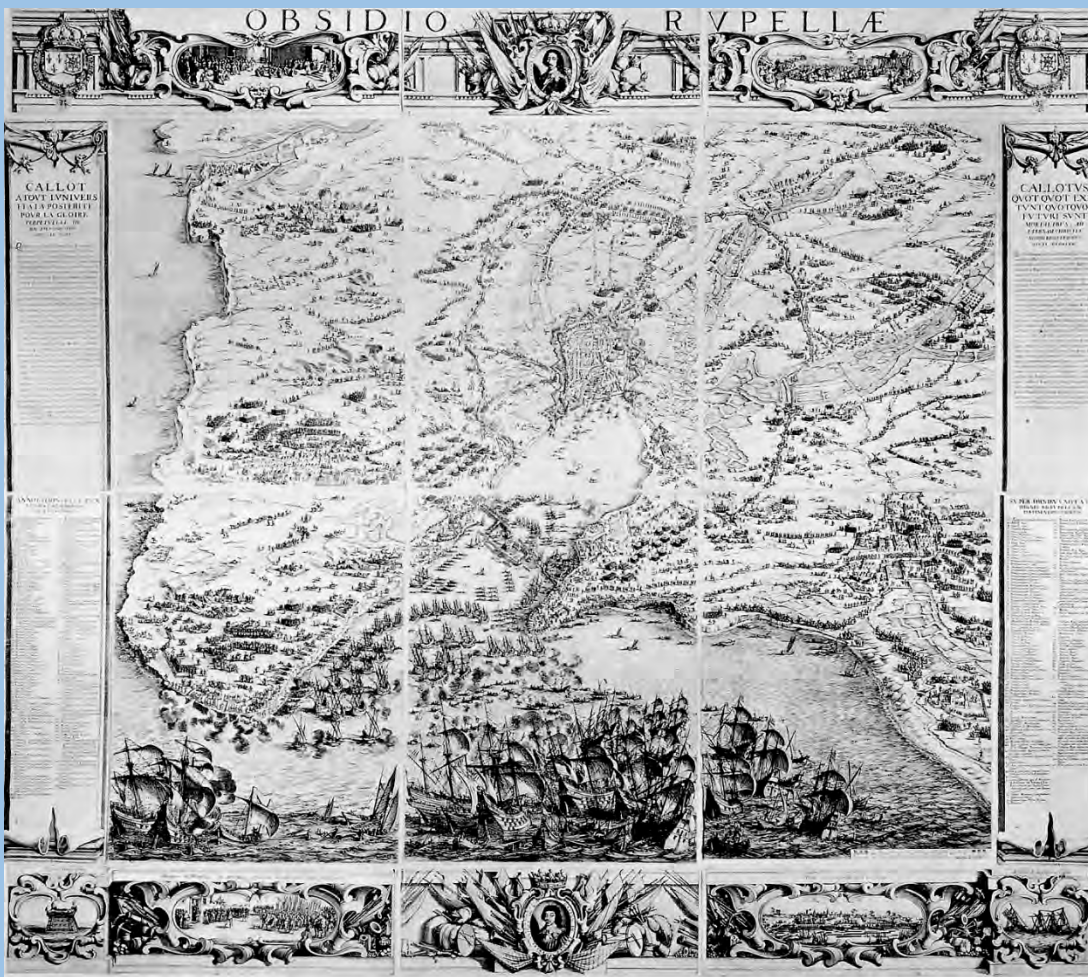
Europa um 1550

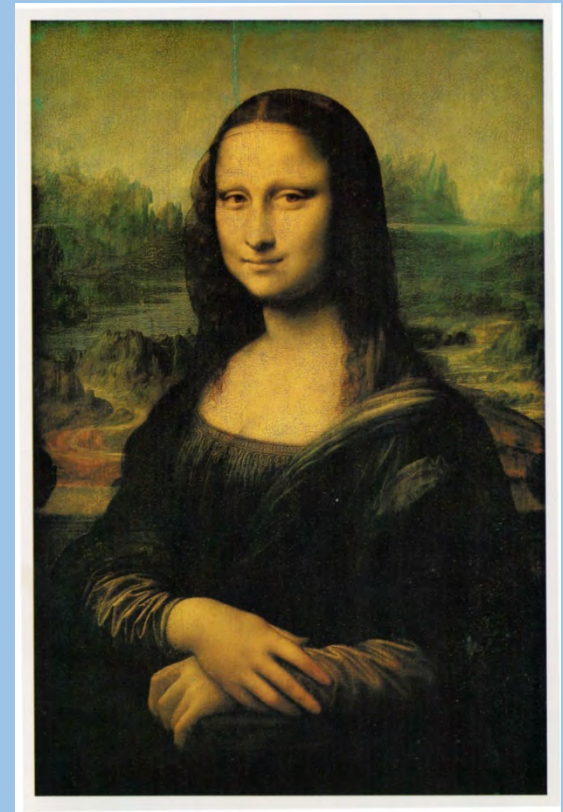


### Glaubens-, Freiheits- und Revolutionskriege in Europa 1550–1700


















# Liure extraor-

DINAIRE DE ARCHITECTURE DE SEBASTIEN  
SERLIO. ARCHITECTE

DV ROY TRESCHRE-

STIEN.

*A. D. 1578*  *Paris*

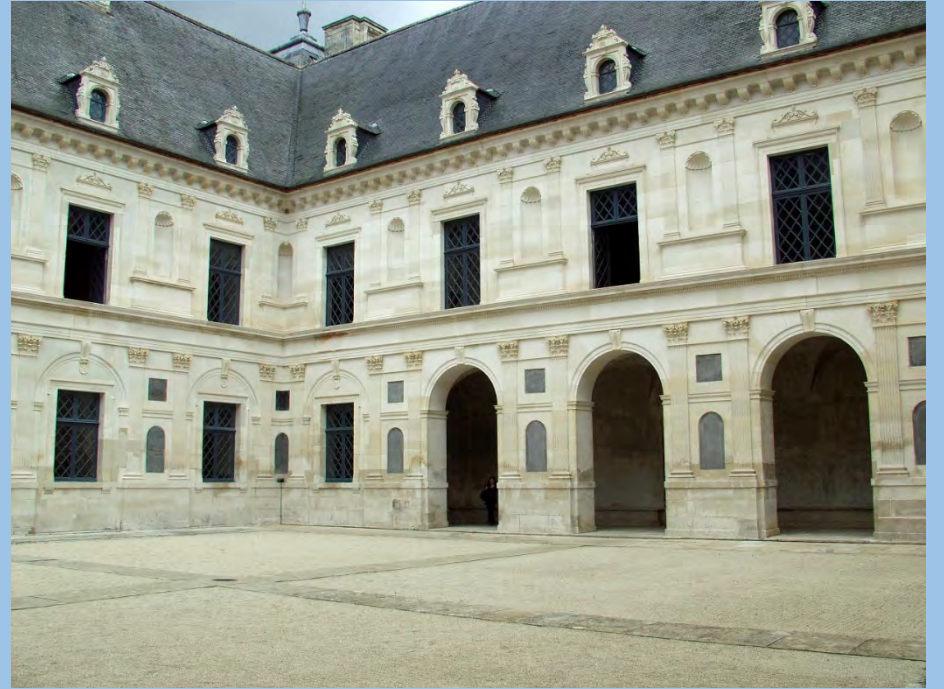
Auquel sont demonstrees trente Portes Rustiques  
meslees de diuers ordres. Et vingt autres d'œu-  
re delicate en diuerfes especes.



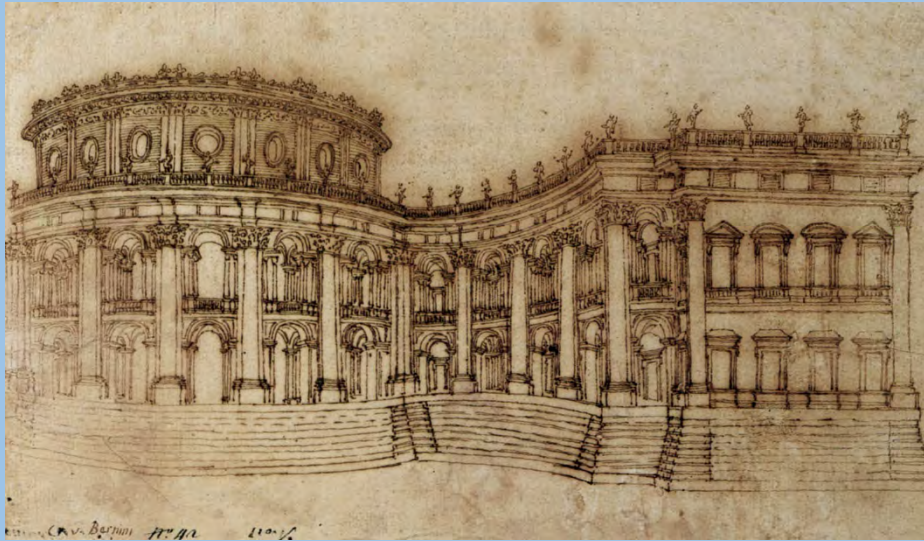
A LYON,  
PAR IEAN DE TOURNES.  
M. D. LI.

Avec Priuilege du Pape, Empereur, Roy treschrestien, & Seigneurie de Venize.





















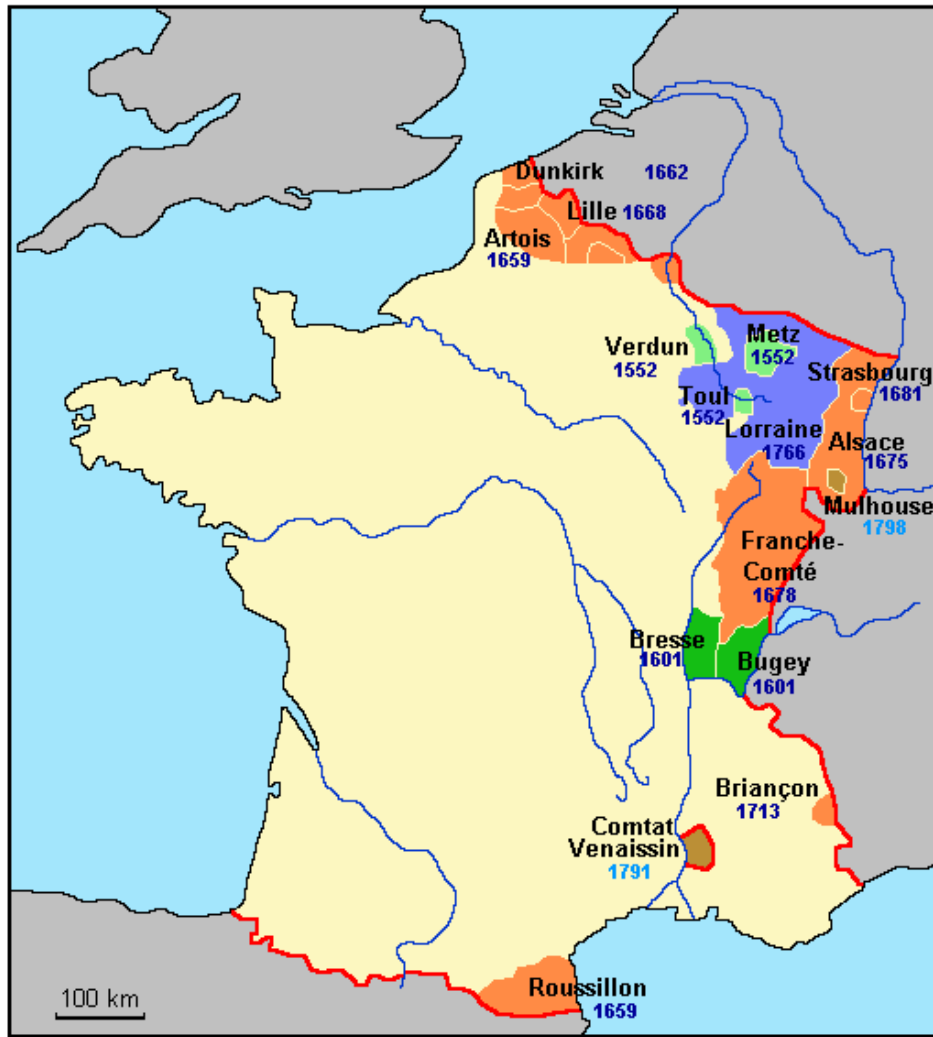






Abriß der Kirche von Charenton 1685. Holzstich. Aus «Histoire populaire de la France», Paris 1863 (Charles Lahure)





FRANCE :

*territory from 1552 to 1798  
from Henri II to the Revolution*

- Henry II
- Henry IV
- Louis XIV
- Louis XV
- Revolution

- Henry II | 1552: Metz, Verdun, Toul
- Henry IV | 1601: Bresse, Bugey
- Louis XIV | 1659: Roussillon  
1659: Artois  
1662: Dunkirk  
1668: Lille  
1675: Alsace  
1678: Franche-Comté  
1681: Strasbourg  
1713: Briançon
- Louis XV | 1766: Lorraine  
1768: Corsica
- Revolution | 1791: Comtat Venaissin  
1798: Mulhouse





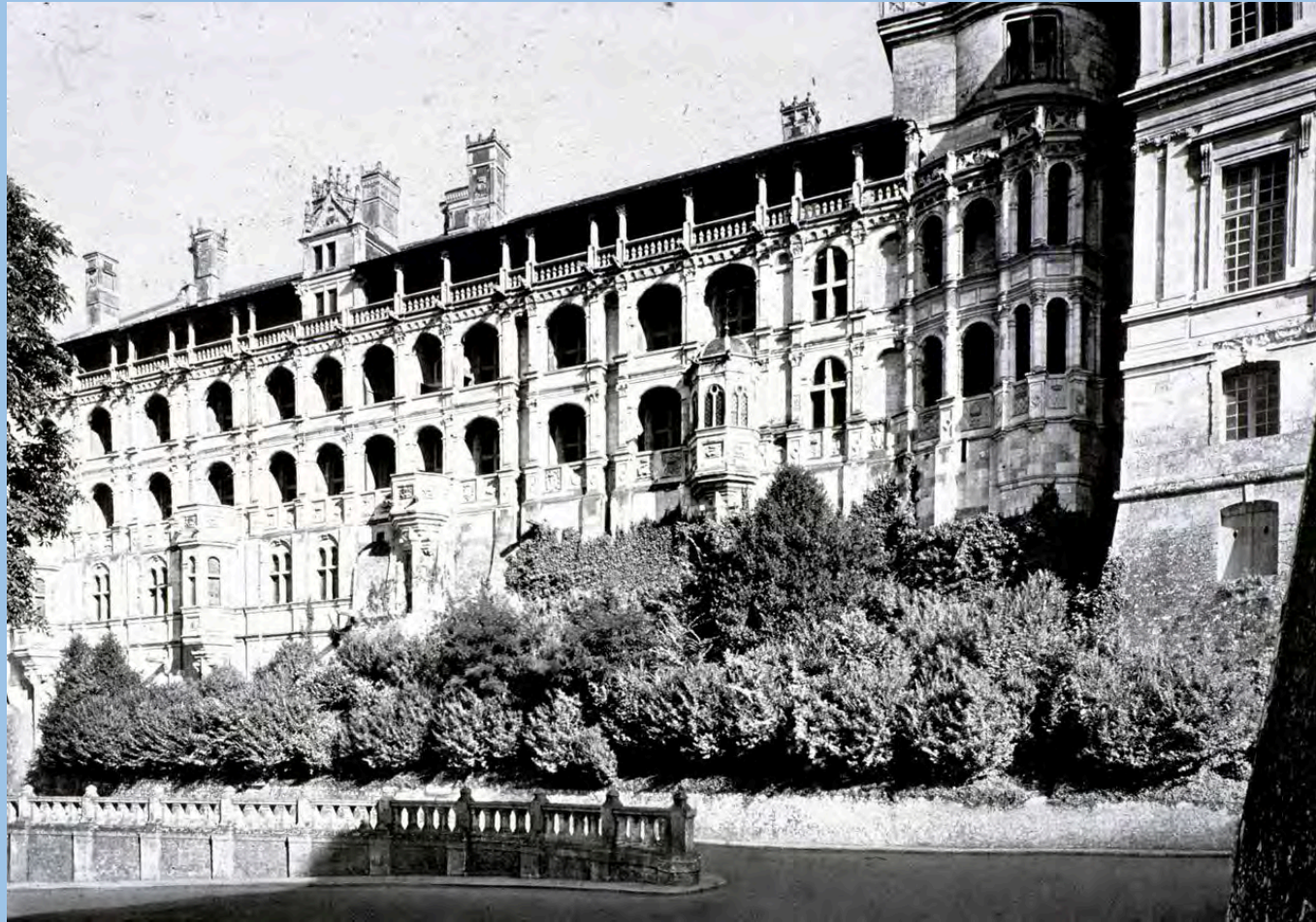
**François-Marie Voltaire**  
**Le siècle de Louis le Grand. Berlin 1751**  
**wieder abgedruckt in: Voltaires, Œuvres**  
Paris 1830, Bände 29 – 31

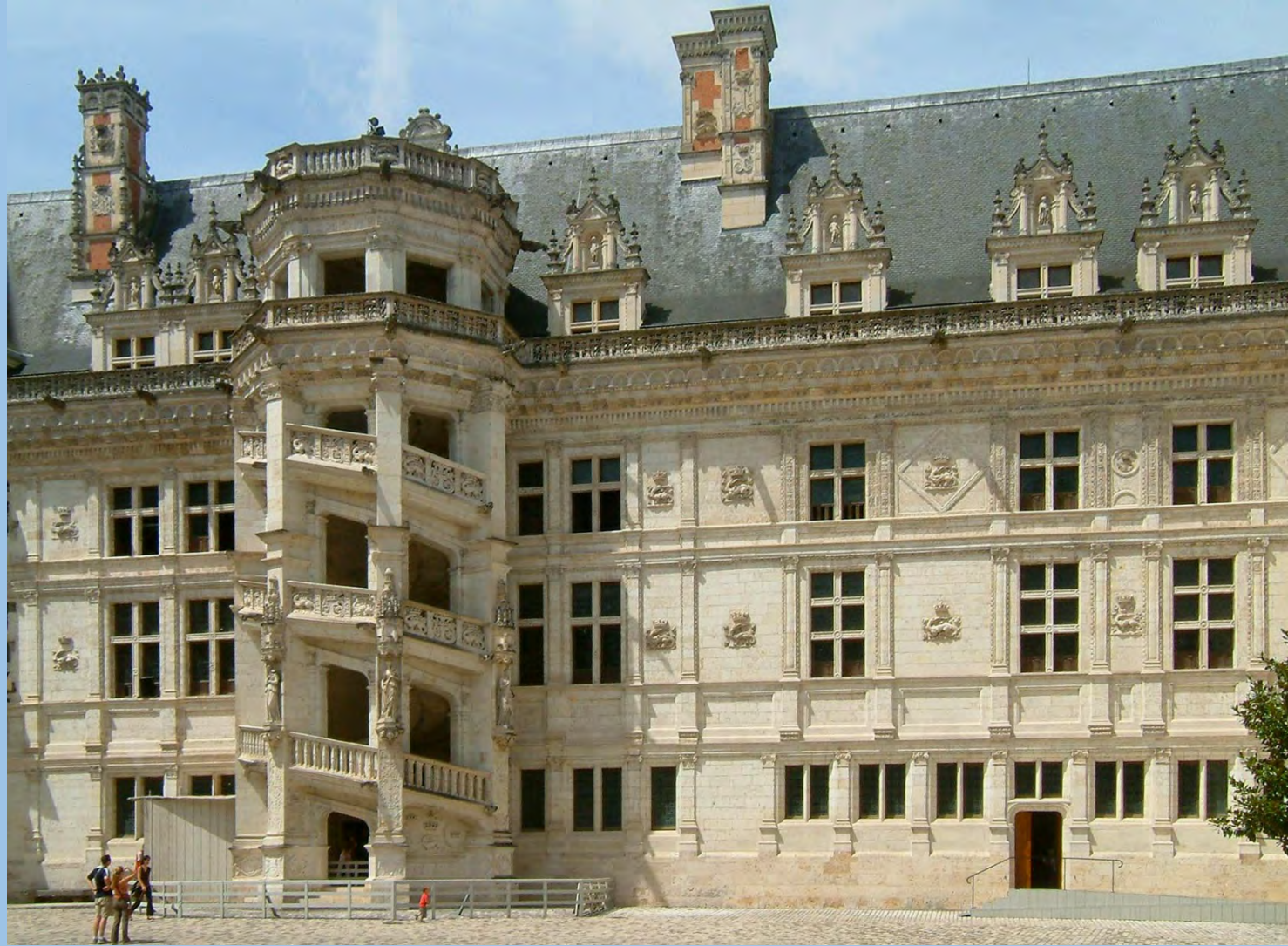
**François-Marie Voltaire**  
**Das Zeitalter Ludwigs XIV.**  
Berlin 2015

**Lothar Schilling**  
**Das Jahrhundert Ludwigs XIV.**  
Frankreich im Grand Siècle, 1598 - 1715  
Darmstadt 2010

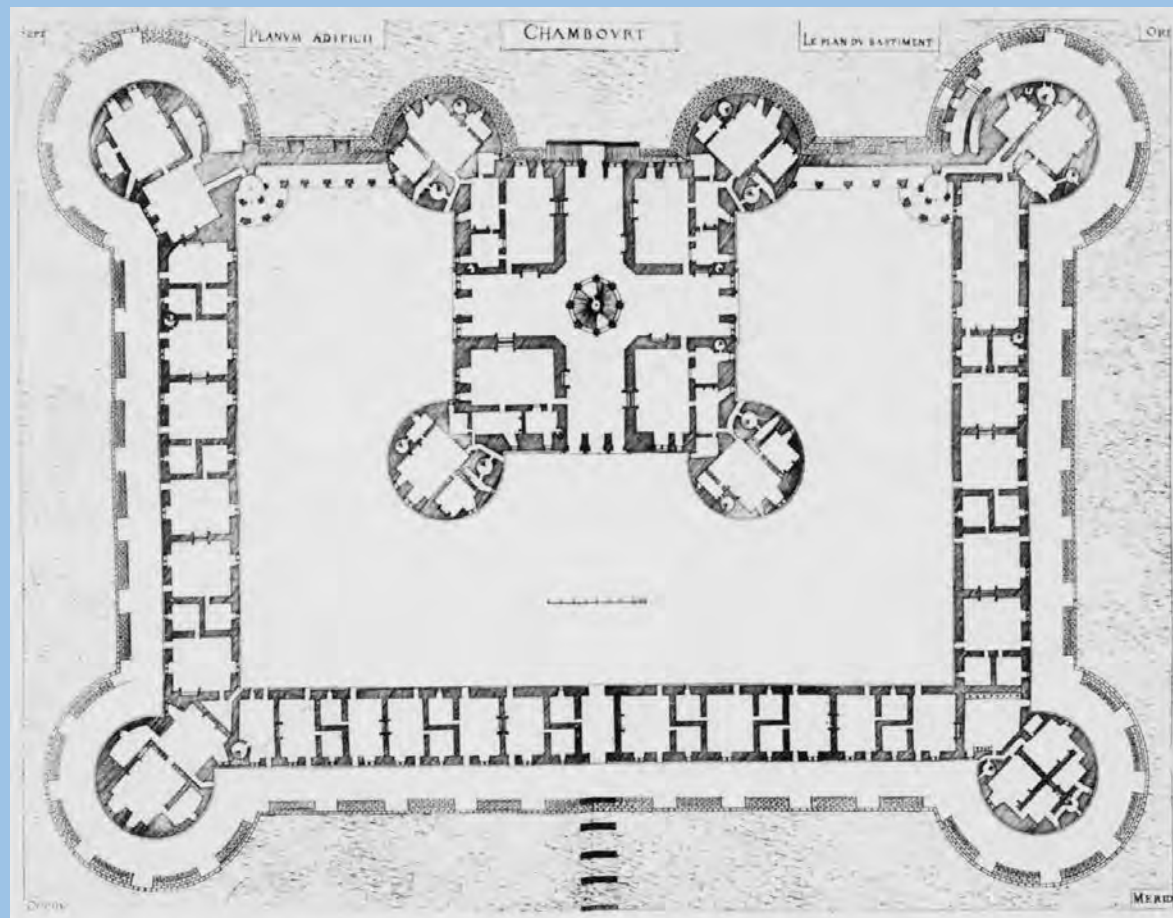
**Erich Hubala**  
**und weitere Autoren**  
**Die Kunst des 17. Jahrhunderts**  
(= Propyläen Kunstgeschichte 9).  
Berlin 1970

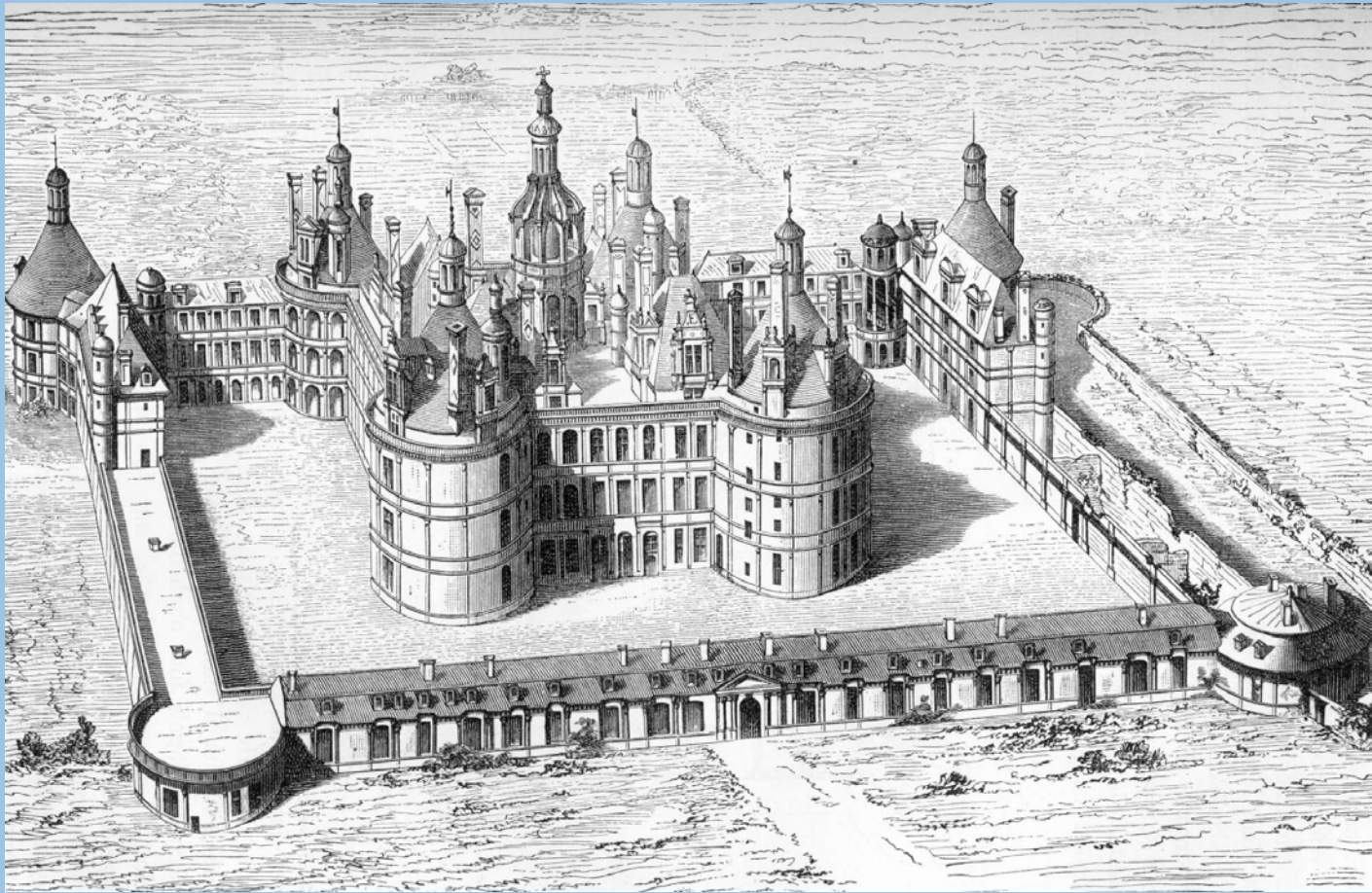
**Anthony Blunt**  
**Art and Architecture in France 1500 - 1700.**  
Harmondsworth, 2. Auflage 1957





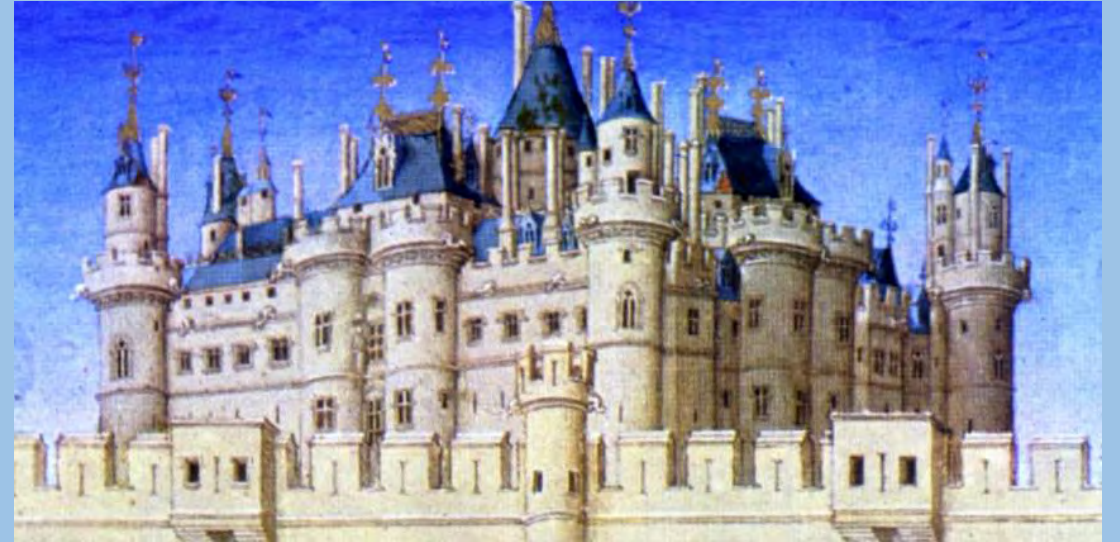


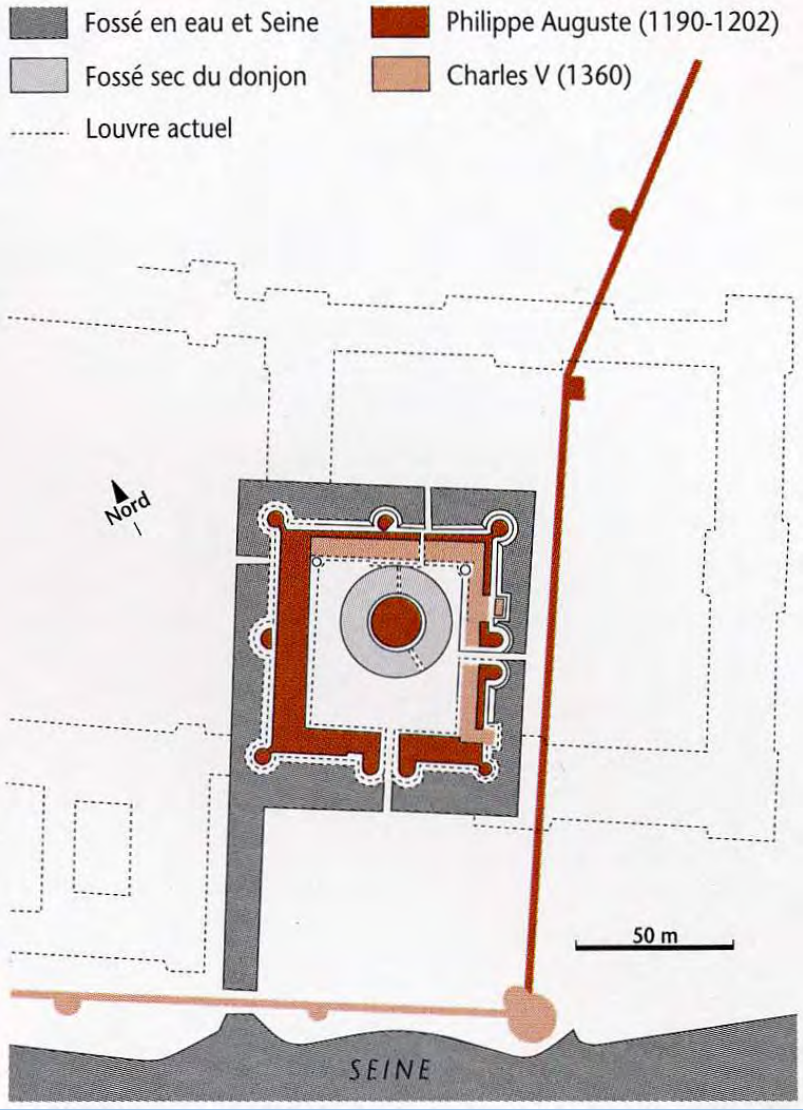


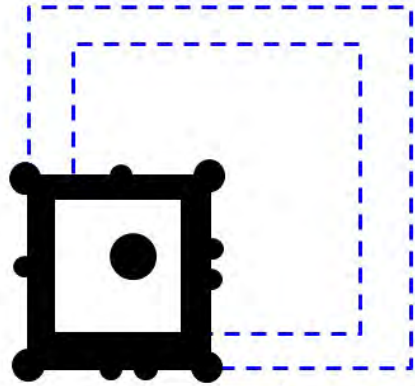




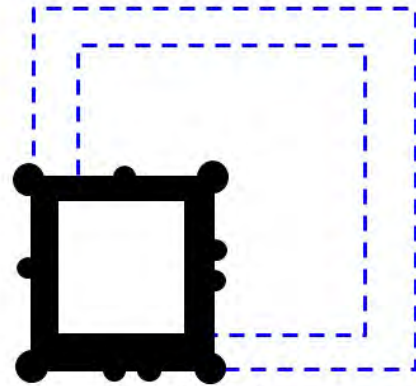




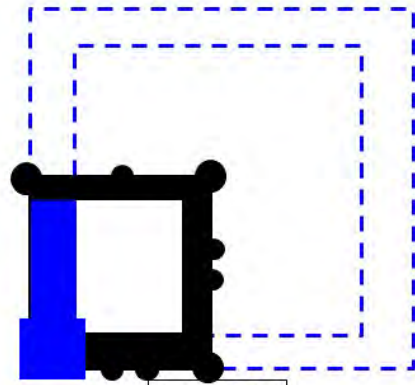




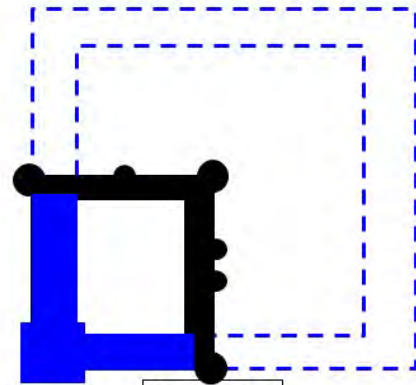
1200-1525



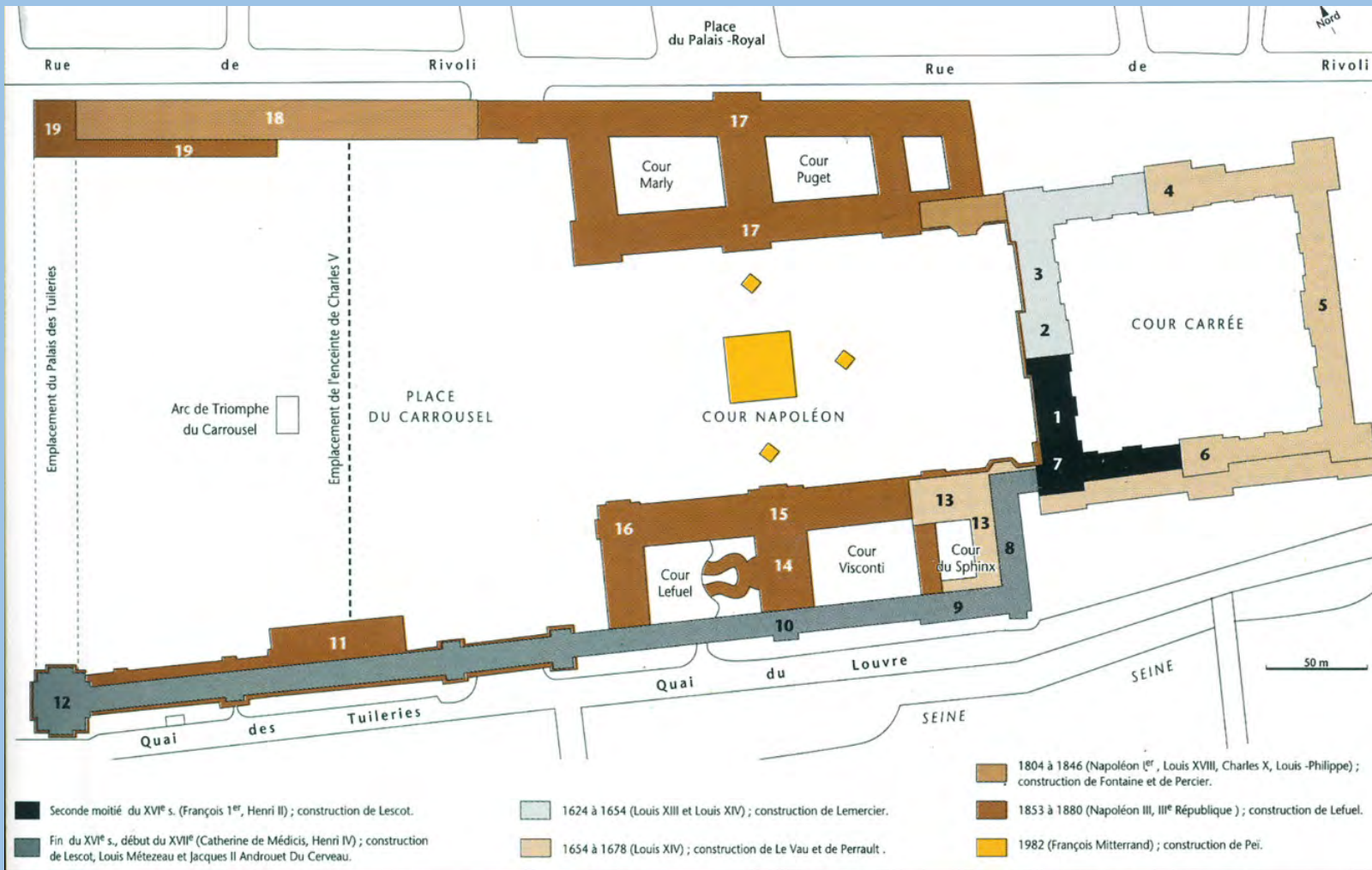
1528



1546-1549



1553-1556









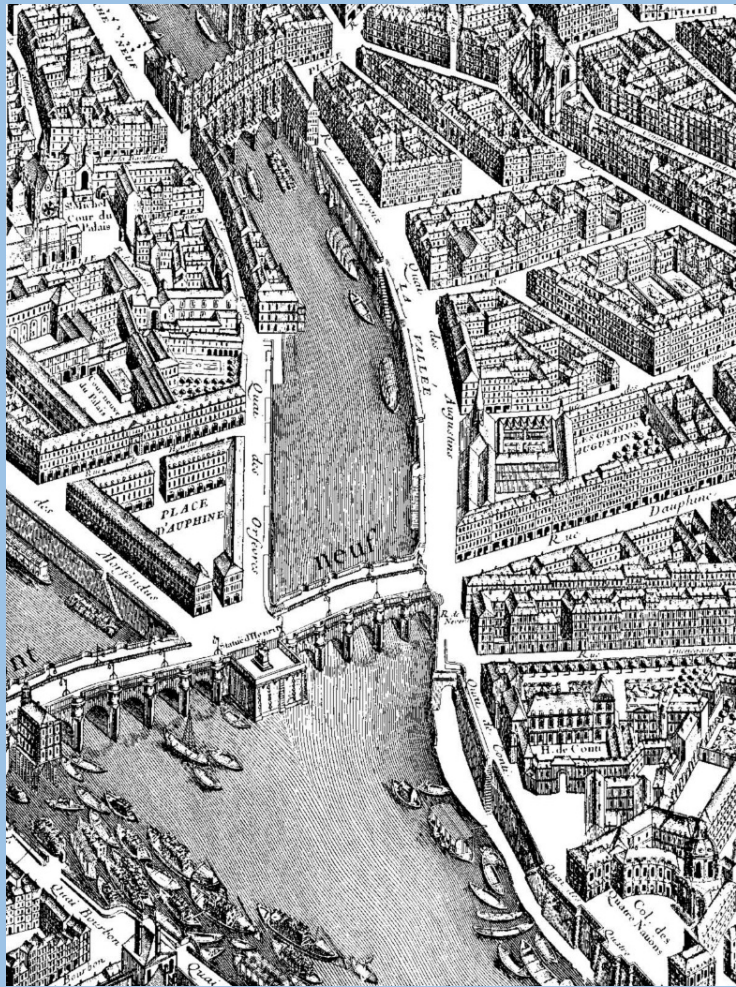


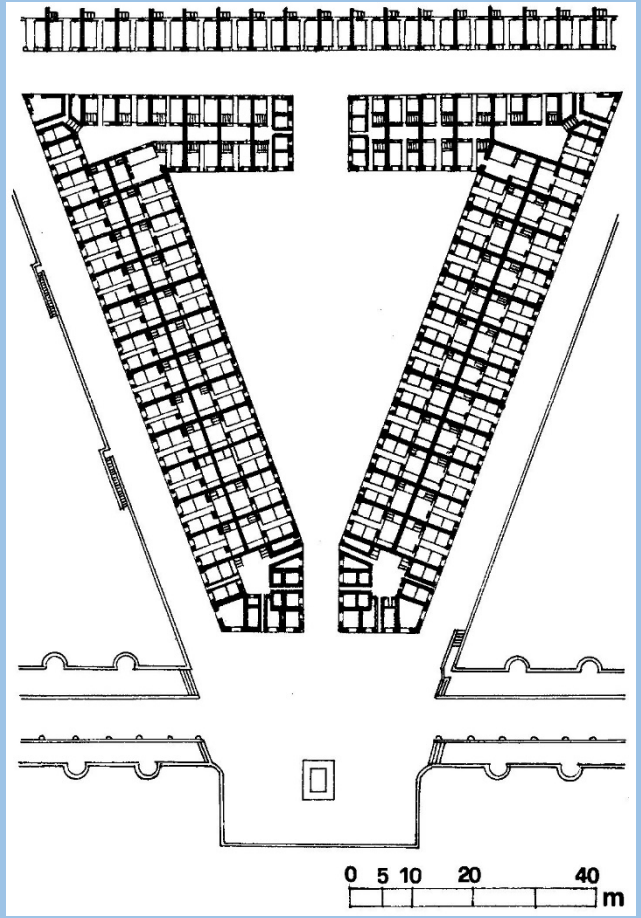






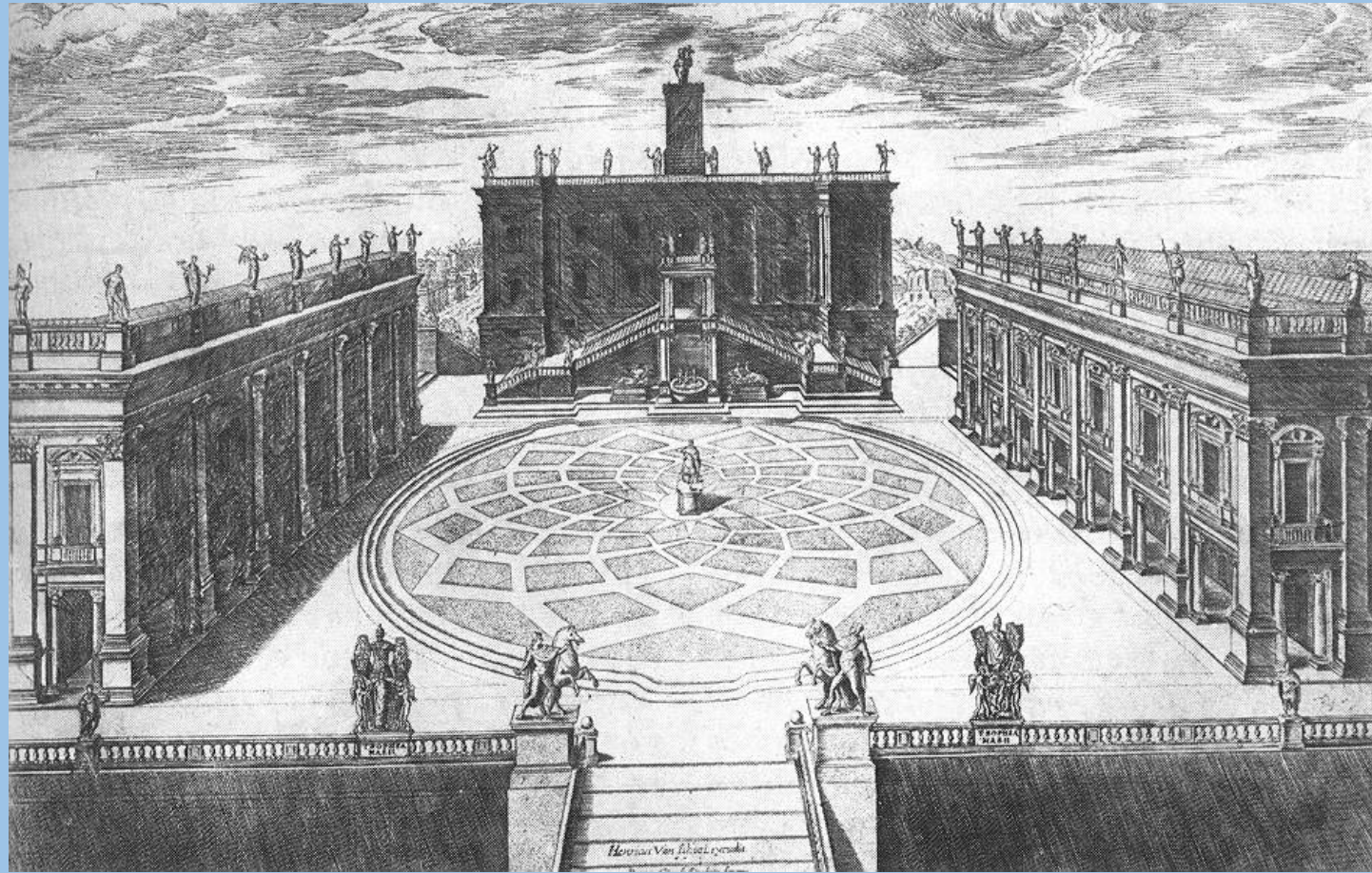








51. Anonyme : Portrait de la Statue Equestre eslevée sur le Pont Neuf pour la glorieuse memoire de Henry le Grand, Roy de France et de Navarre, Restaurateur de la Liberté Française, vers 1640, gravure, 35,4 × 23,5 cm, Bibliothèque nationale de France





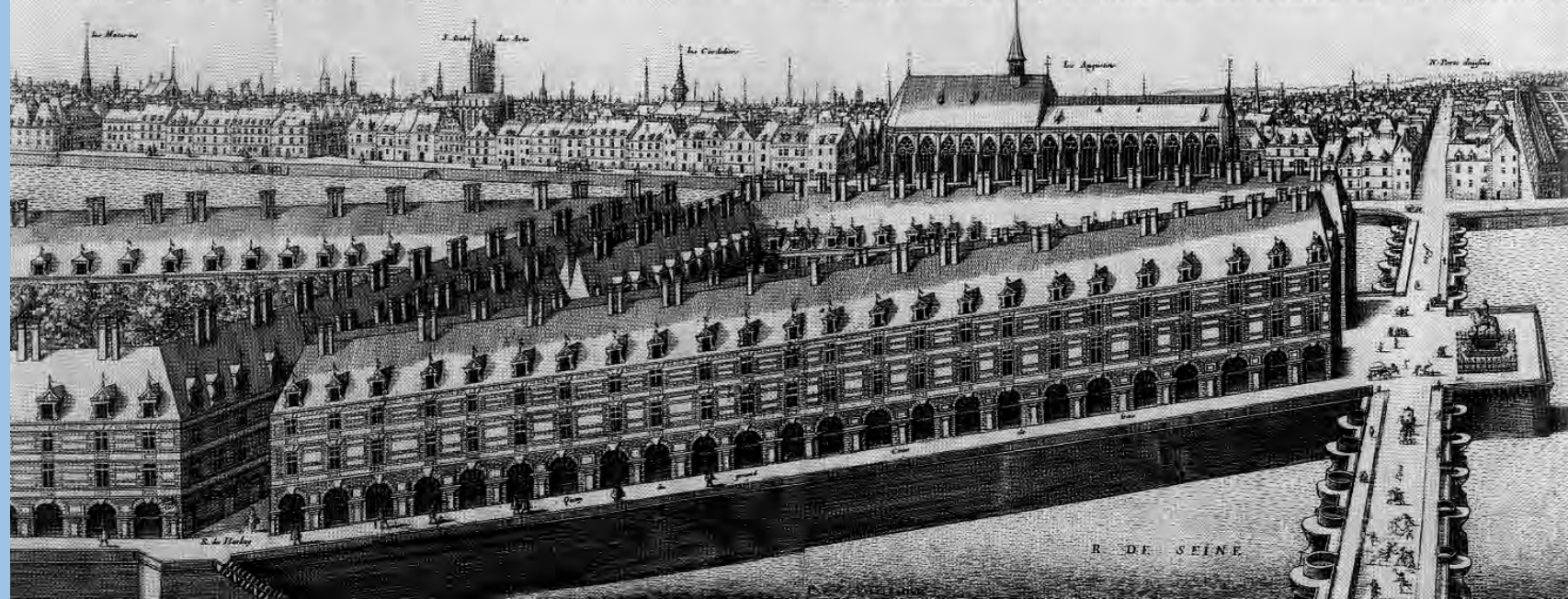




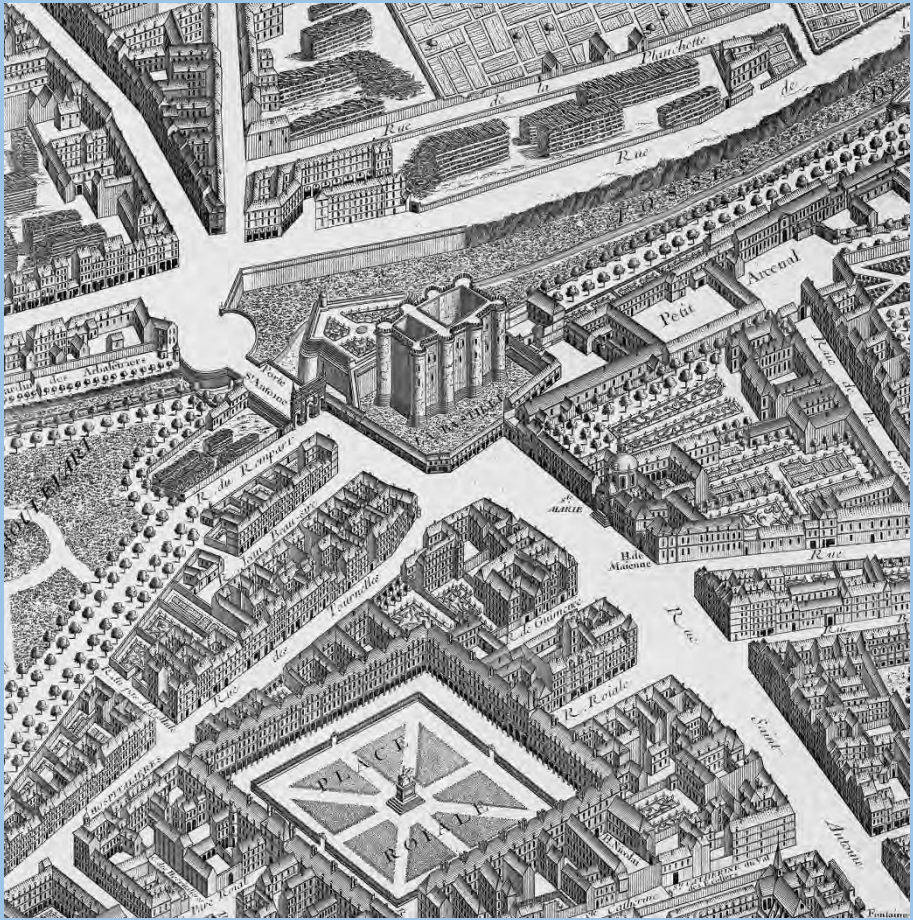




LA PLACE D'APHINE CONSTRVITE DANS LA VILLE DE PARIS DV RANT LE REGNE DE HENRI LE GRAND 4<sup>e</sup> DV NOM ROY DE FRANCE ET DE NAVARRE





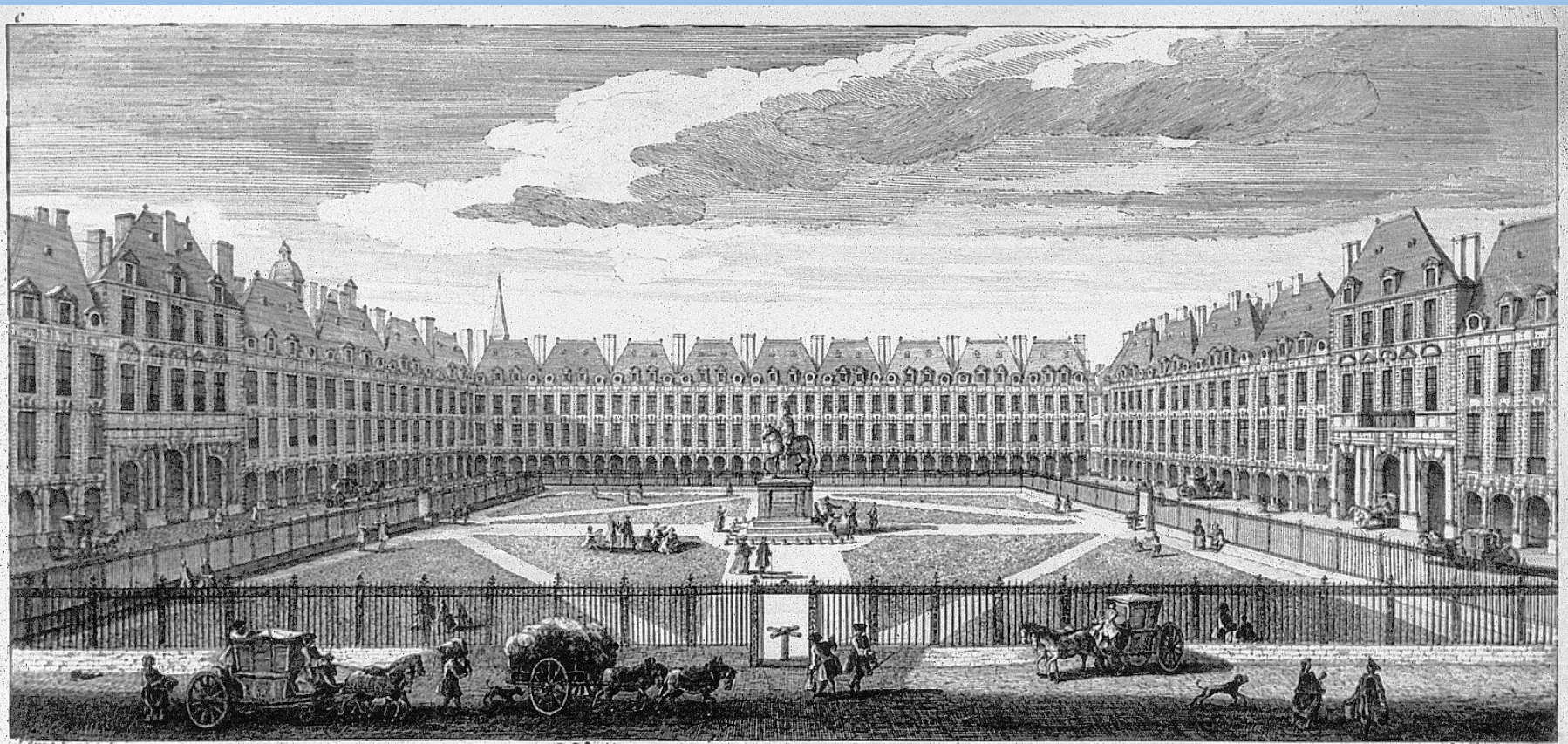




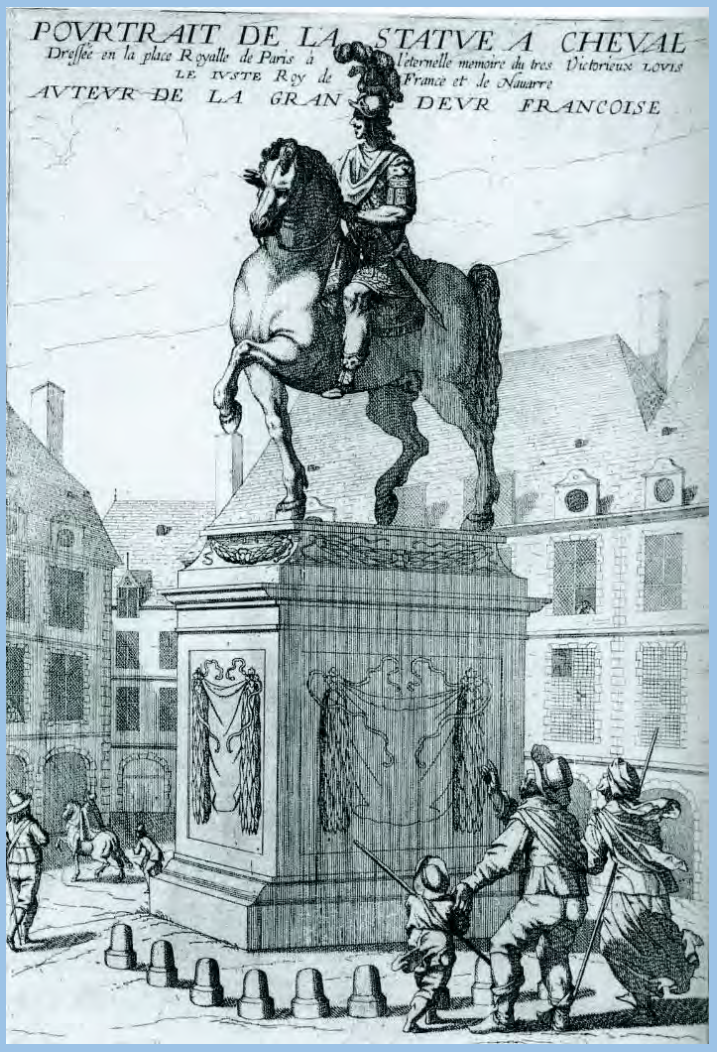








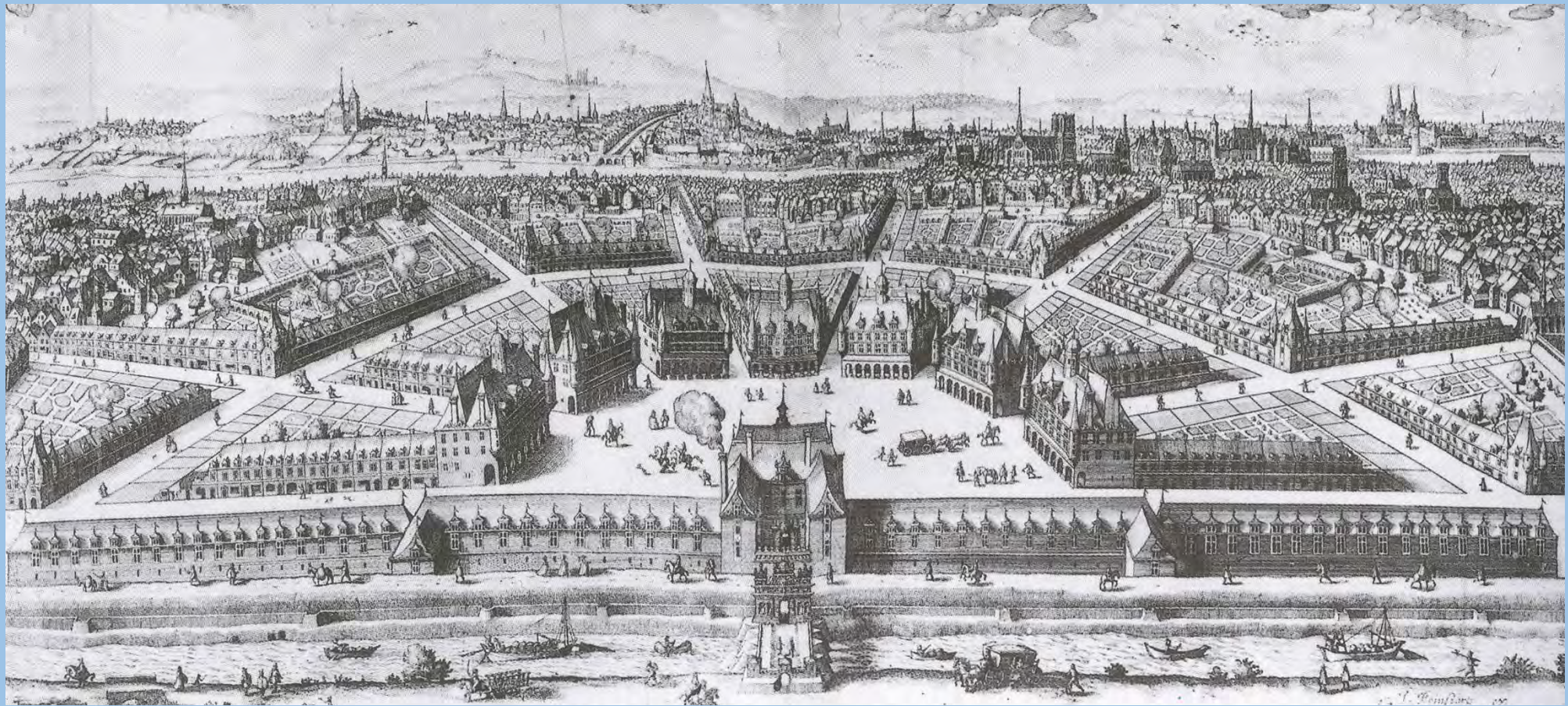
VUE DE LA PLACE ROYALE.  
*La milice de laquelle est placée en bronze La figure Equestre du Roy LOUIS XIII.*



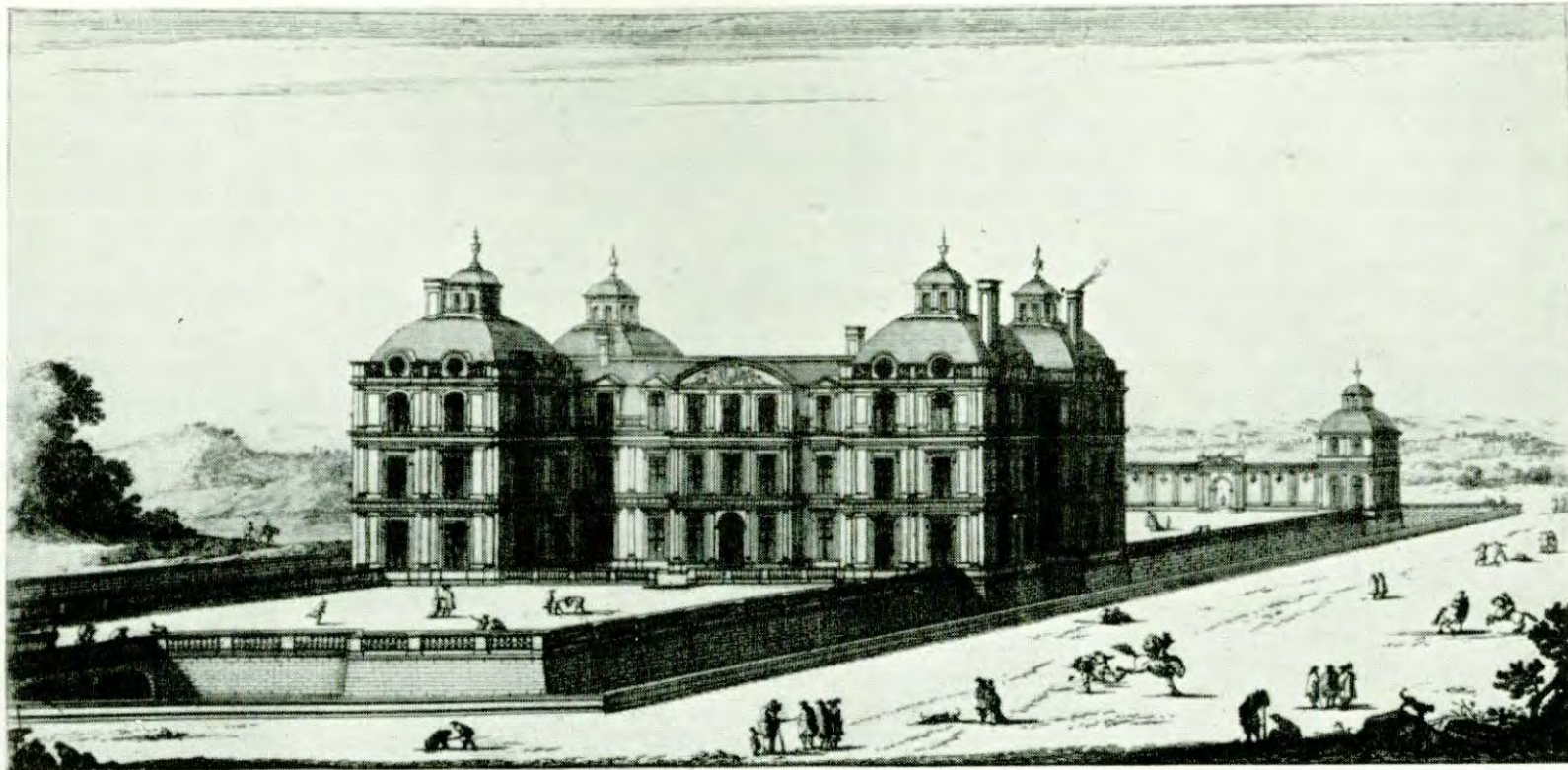






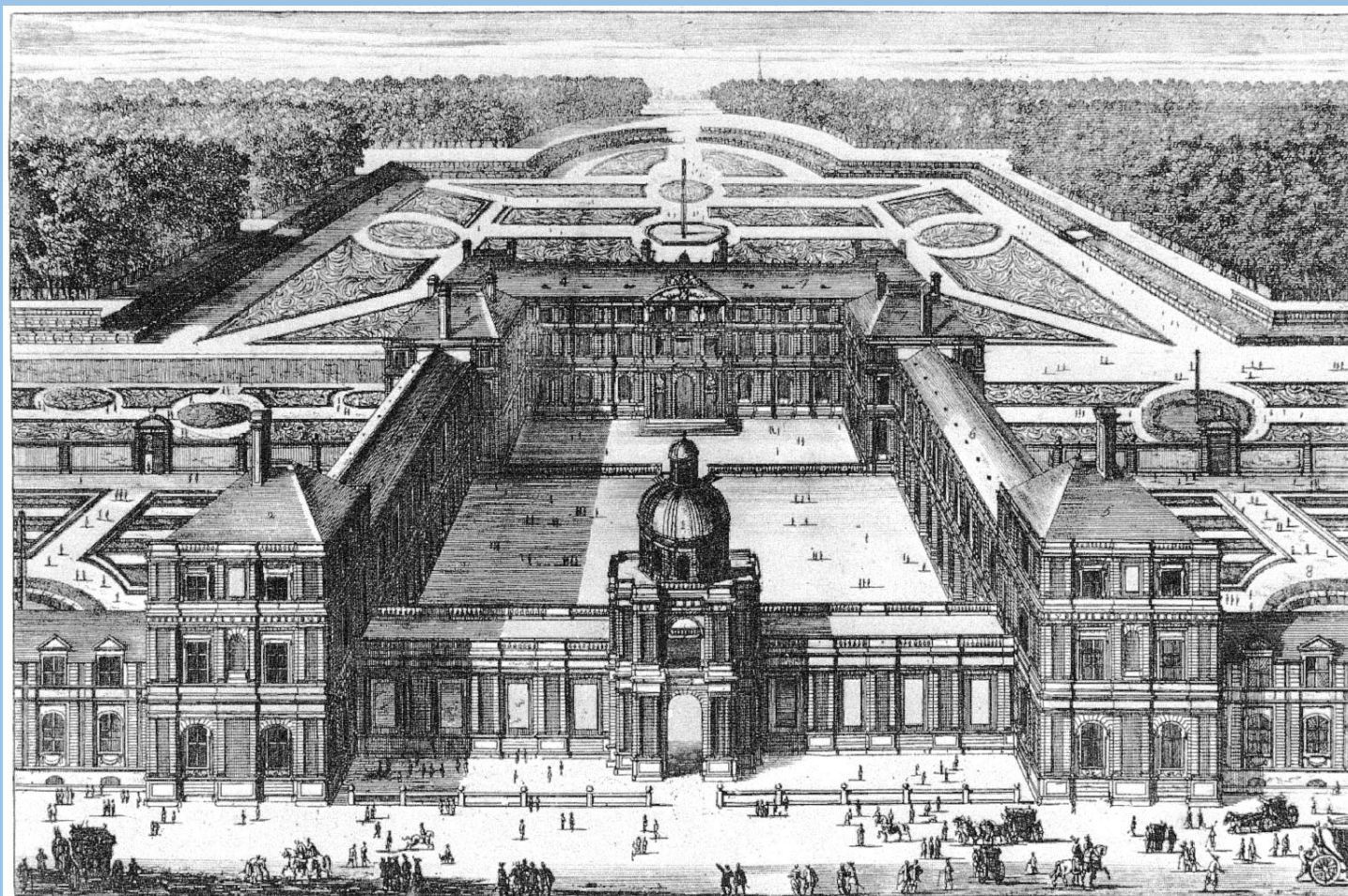






(A) Salomon de Brosse: Château of Blérancourt. 1614. Engraving by Silvestre



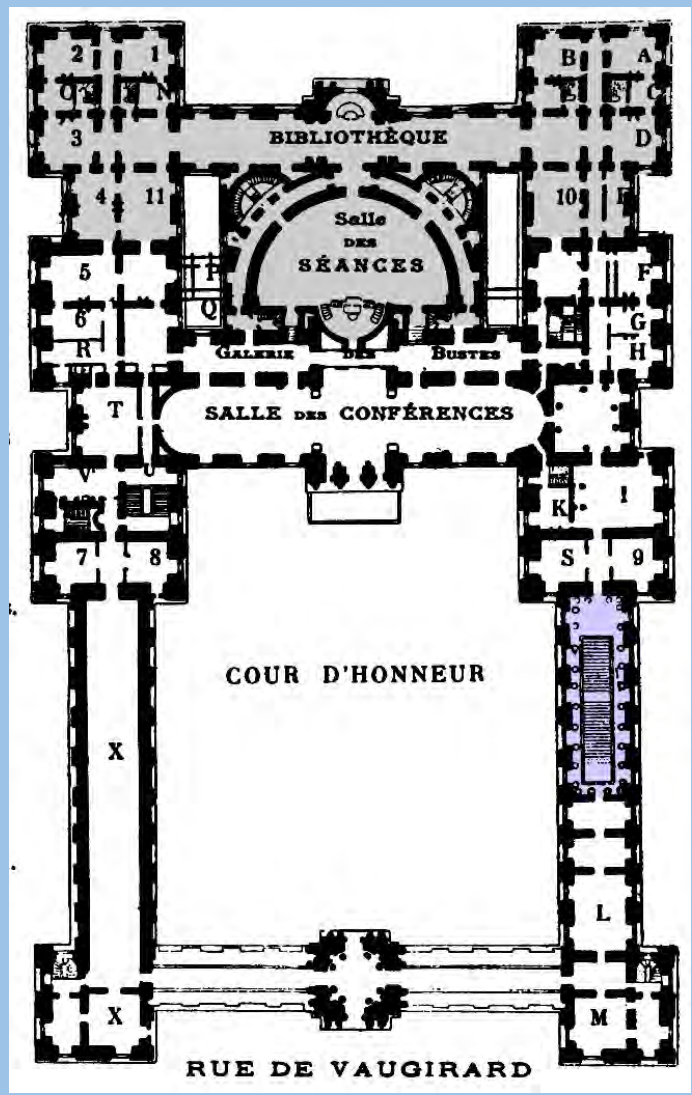


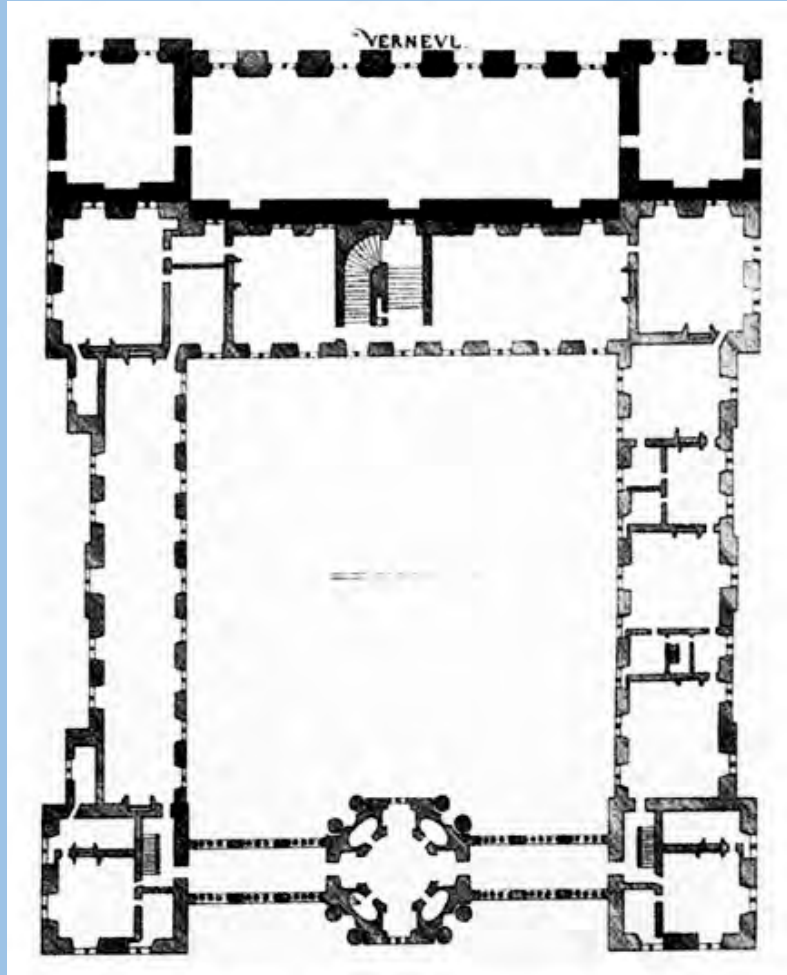
1 le Dome ou Trésor des titres.  
 2 les Offices et Salles du commun de Mad<sup>e</sup>.  
 3 la Galerie des petits Appartemens.  
 4 Appartemens de Mad<sup>e</sup>.

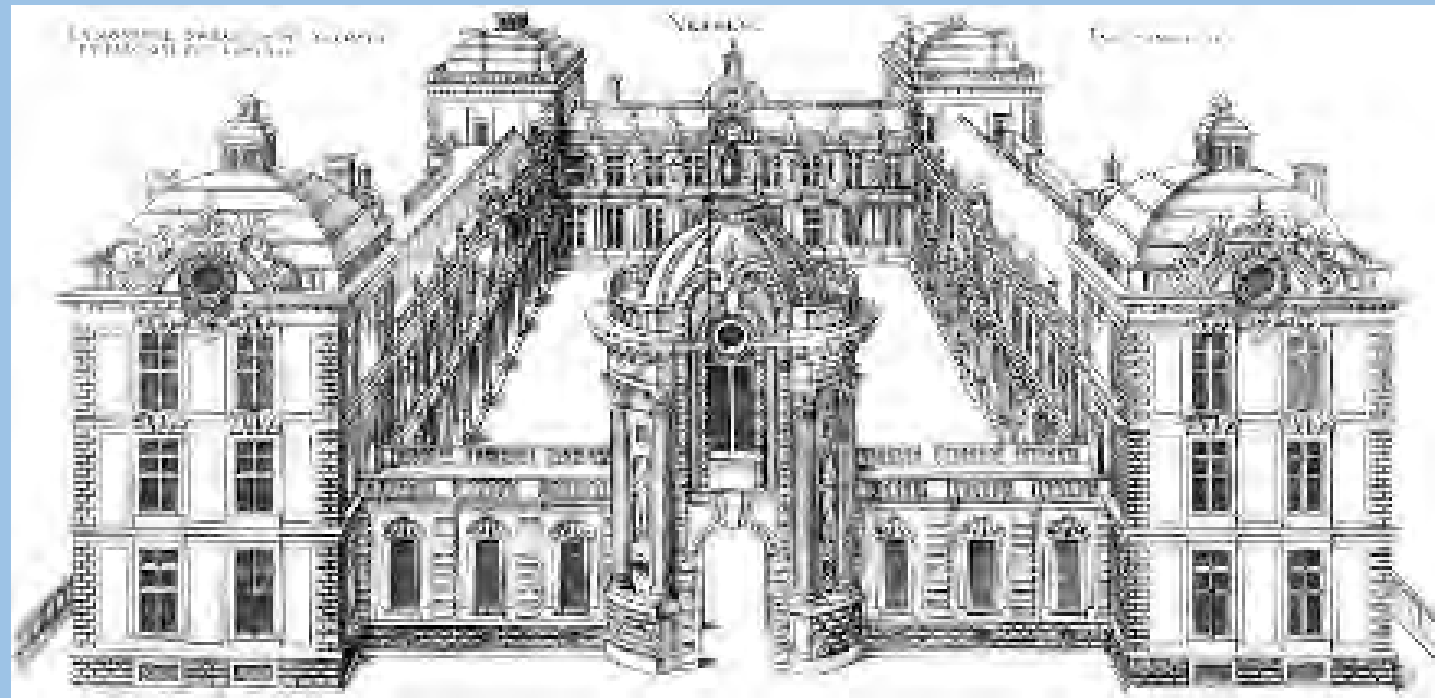
*Vue du Palais d'Orleans appelé Luxembourg*  
 Chez M. Langlois rue S<sup>t</sup>. Jacques à la victoire avec Priuil du Roy

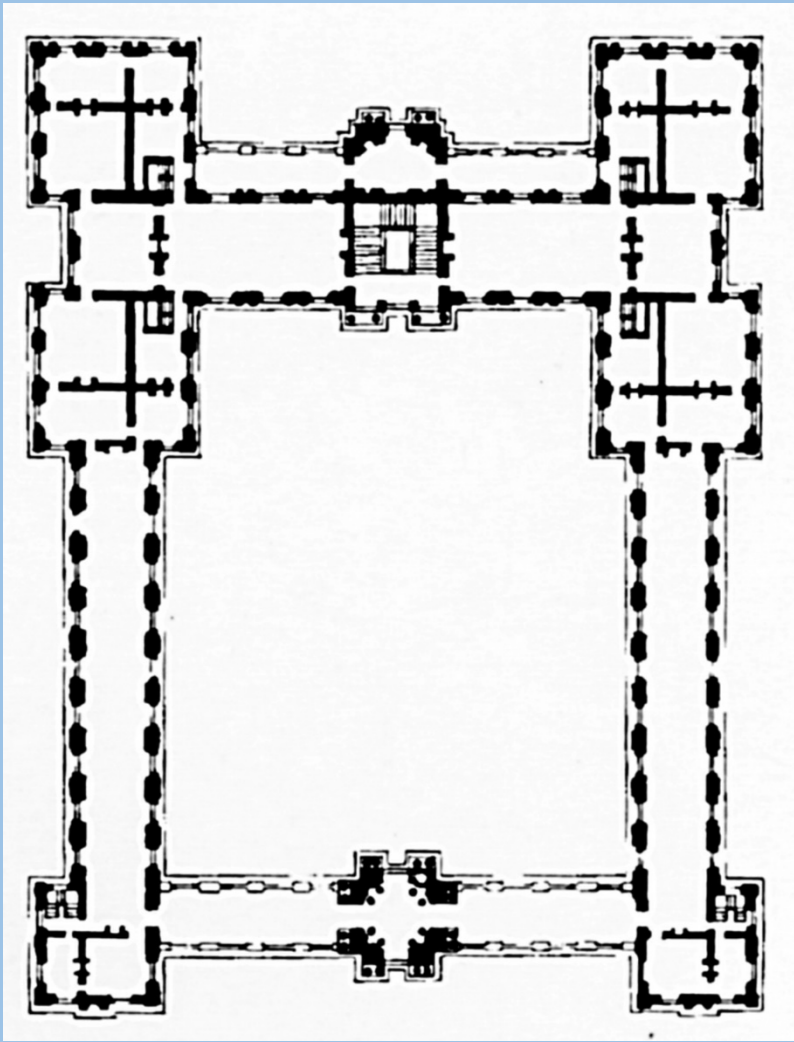
5 le Pavillon de la Bibliothèque et au dessous les Offices de  
 Mad<sup>e</sup> de Guise, 6 la Galerie des Finances de Richelieu.  
 7 les Appartemens de Mad<sup>e</sup> de Guise.  
 8 le petit Luxembourg.



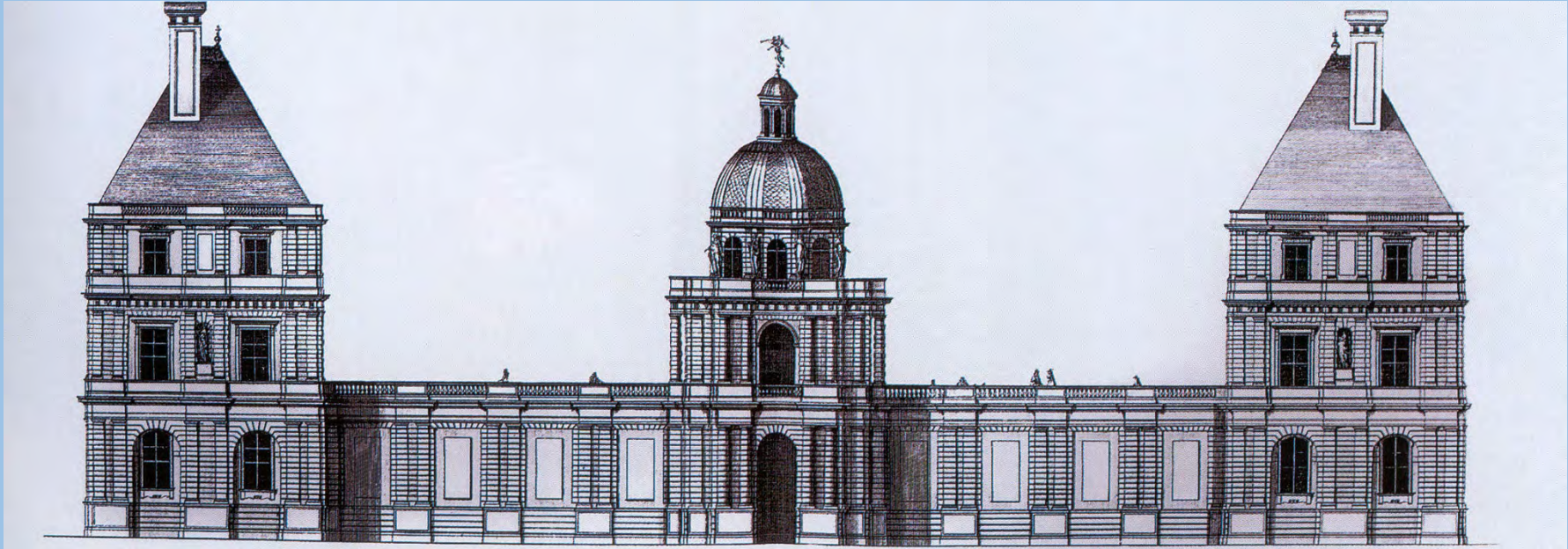






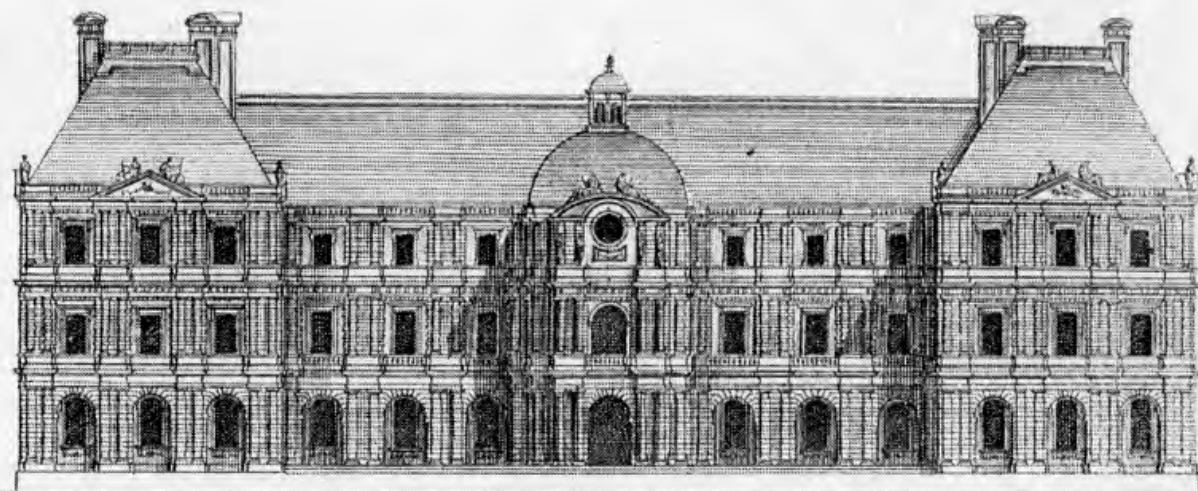












*Elevation du Palais d'Orléans du costé du Jardin*

VUE DU PALAIS DU LUXEMBOURG.



LE PALAIS DU LUXEMBOURG.

A Paris Chez J. Chéron, N. l'Estampes Rue S. Jacques N. 55. Près la Fontaine S. Severin.

GAUTHIER DEL.

75040-22

**Erich Hubala, Renaissance und Barock**  
(Epochen der Architektur)  
Frankfurt am Main 1968

**Stephan Hoppe, Was ist Barock?**  
Architektur und Städtebau Europas 1570 – 1780  
Darmstadt, 2. Auflage 2010

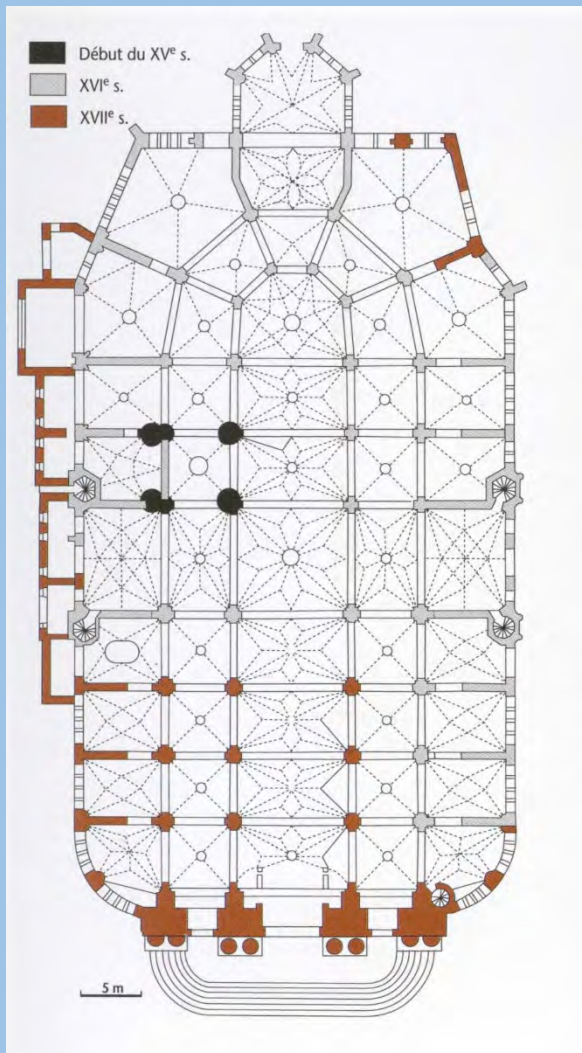












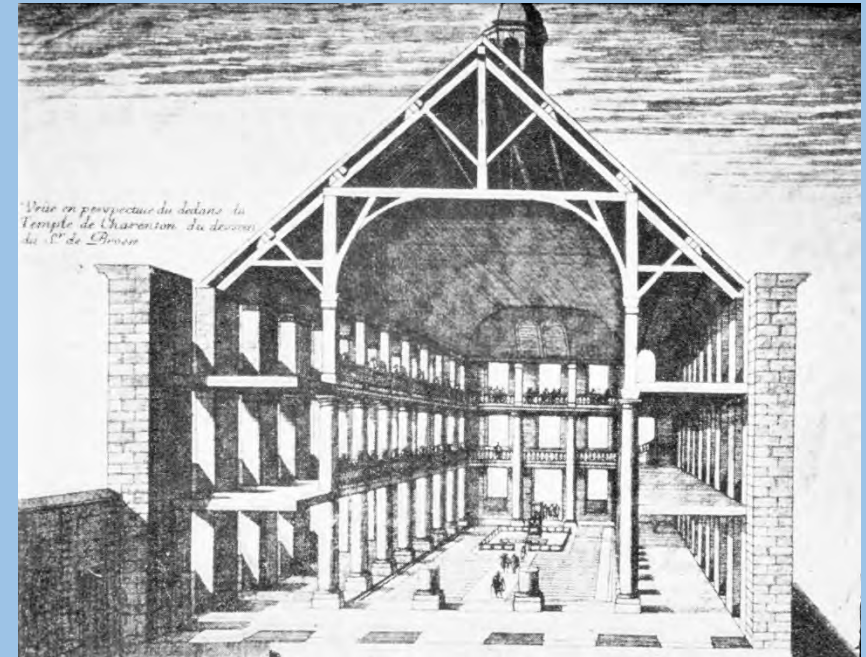




Fig. 1. Portico di S. Pietro



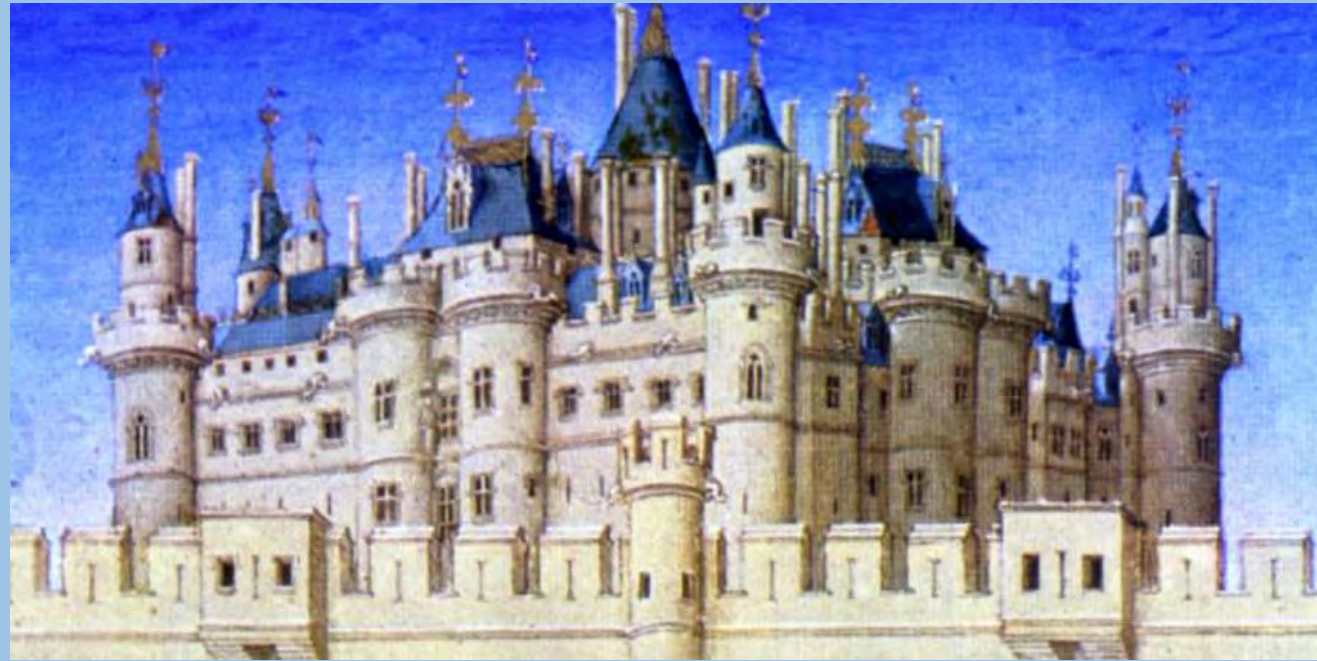


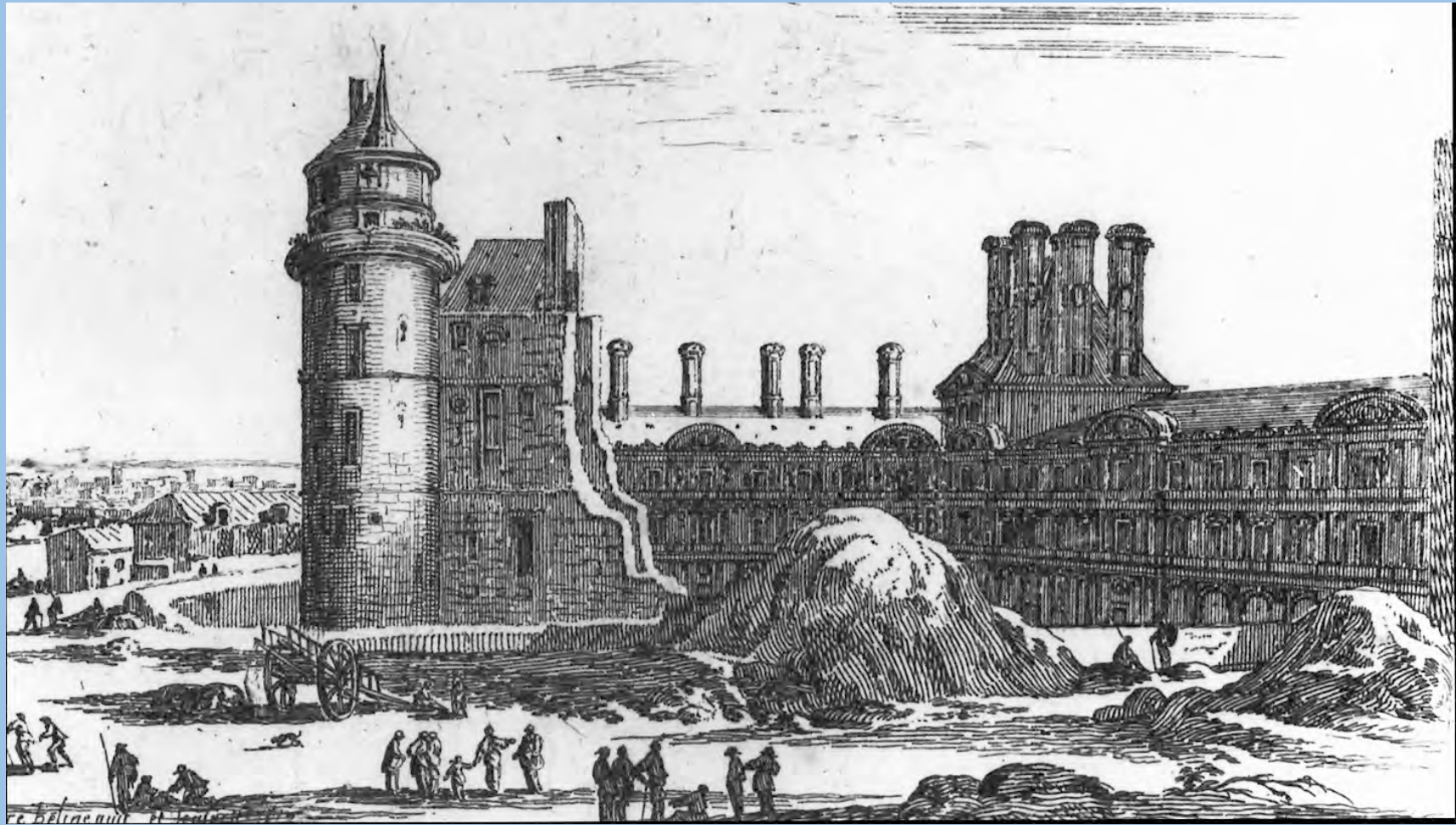




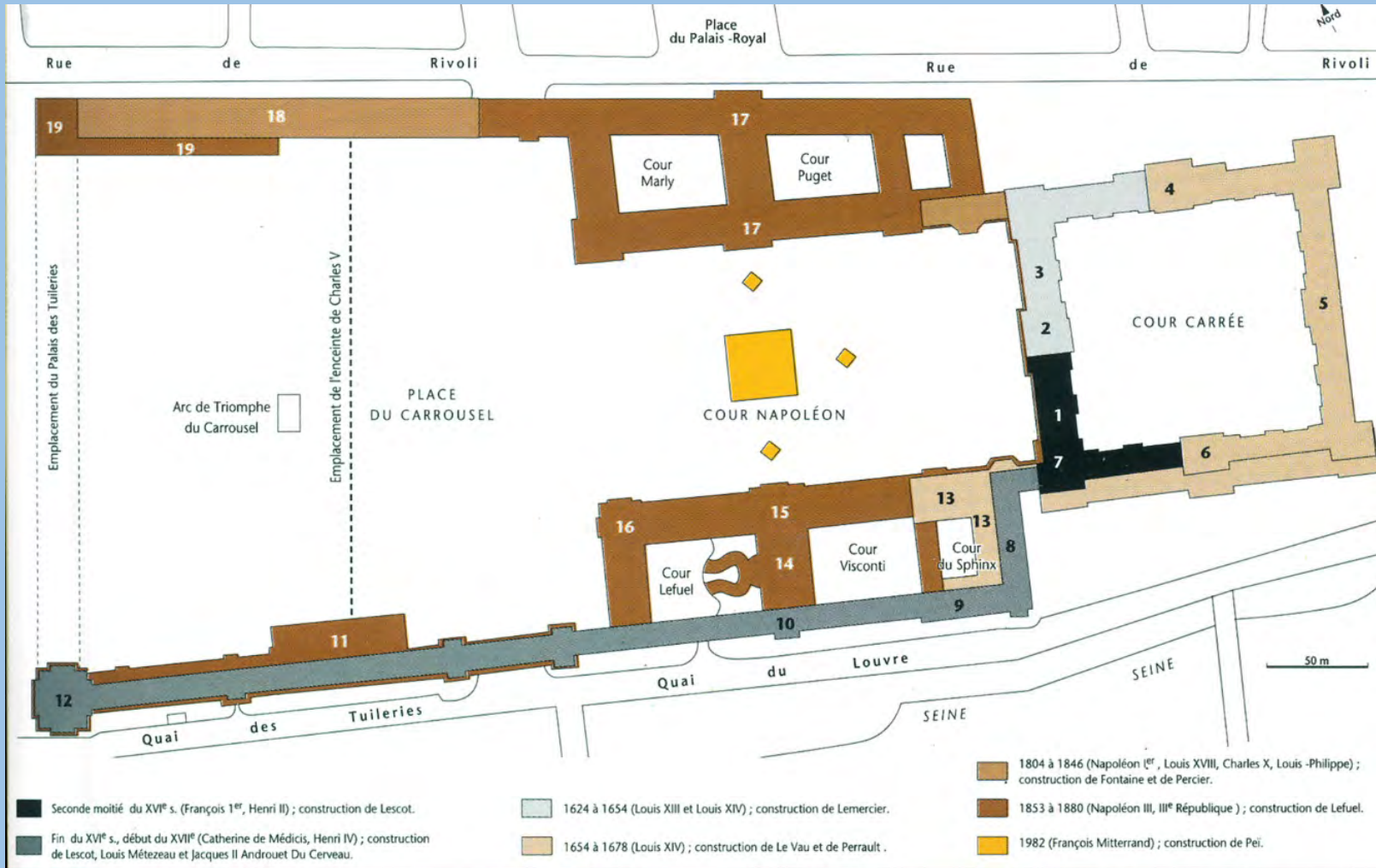


Abriß der Kirche von Charenton 1685. Holzstich. Aus «Histoire populaire de la France», Paris 1863 (Charles Lahure)



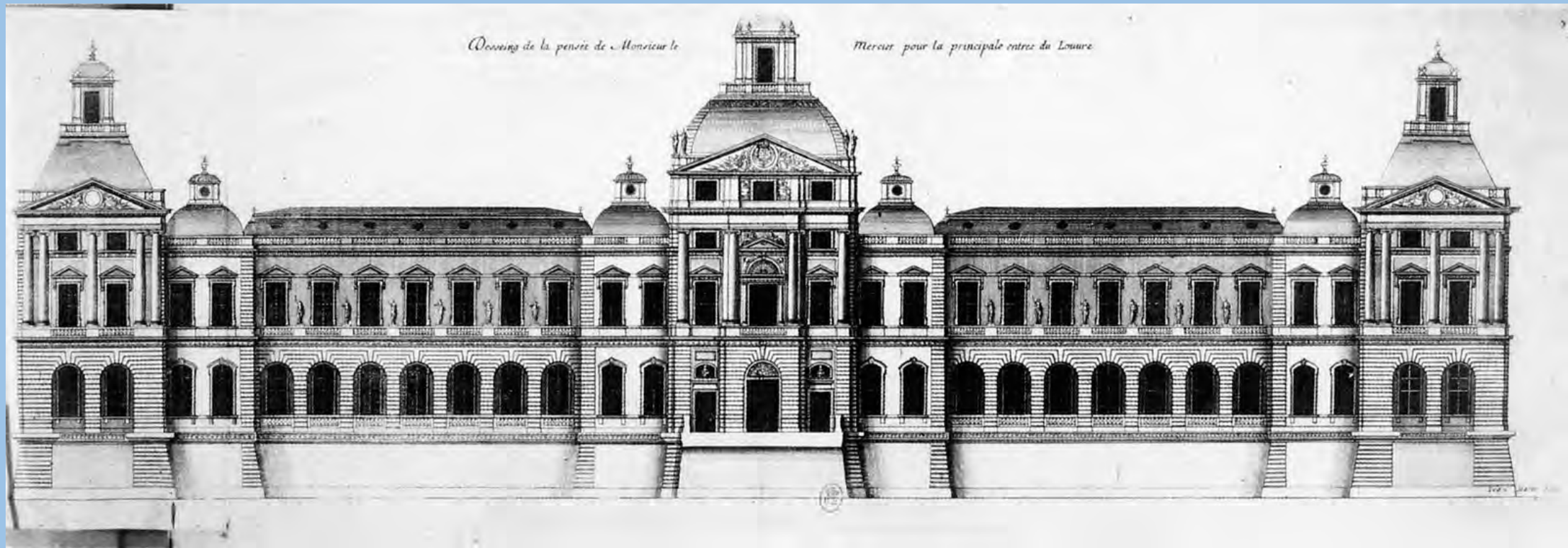


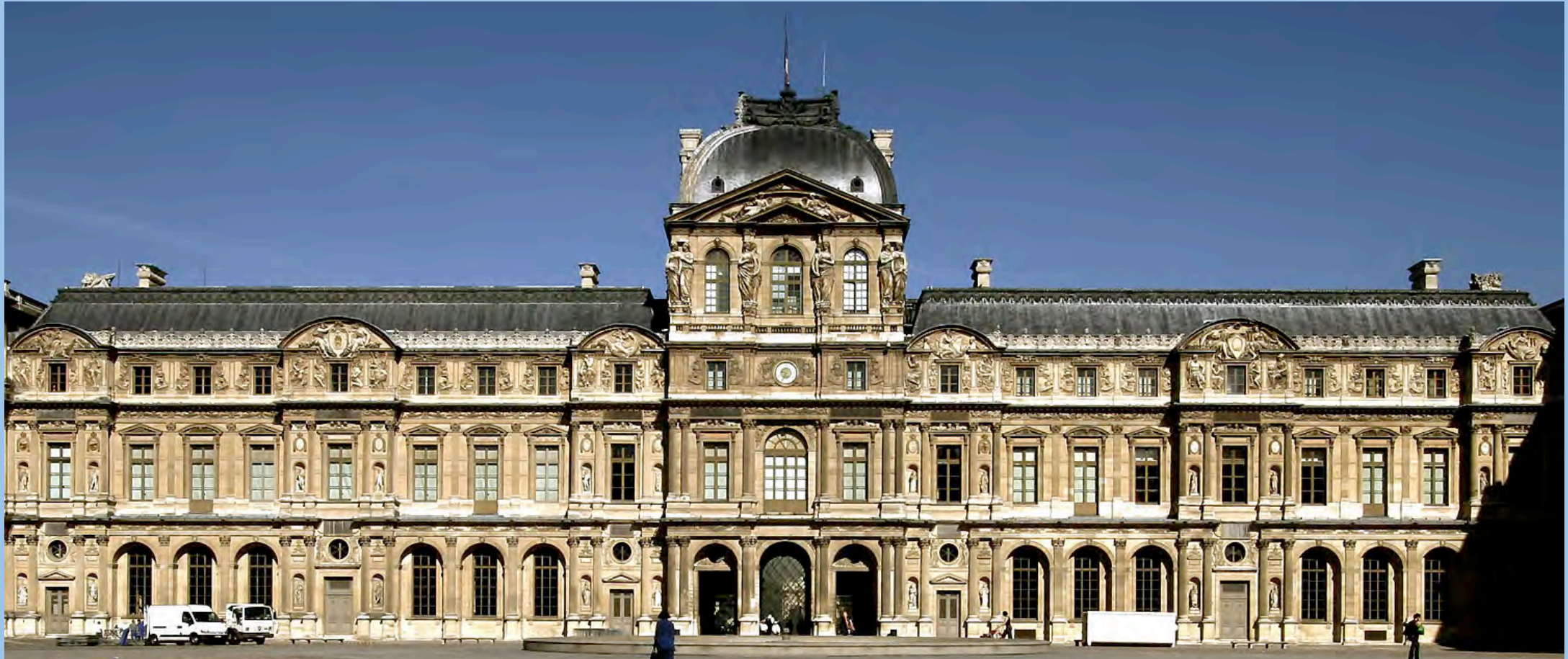




*Dessins de la penée de Monsieur le*

*Mercuz pour la principale entree du Louvre*

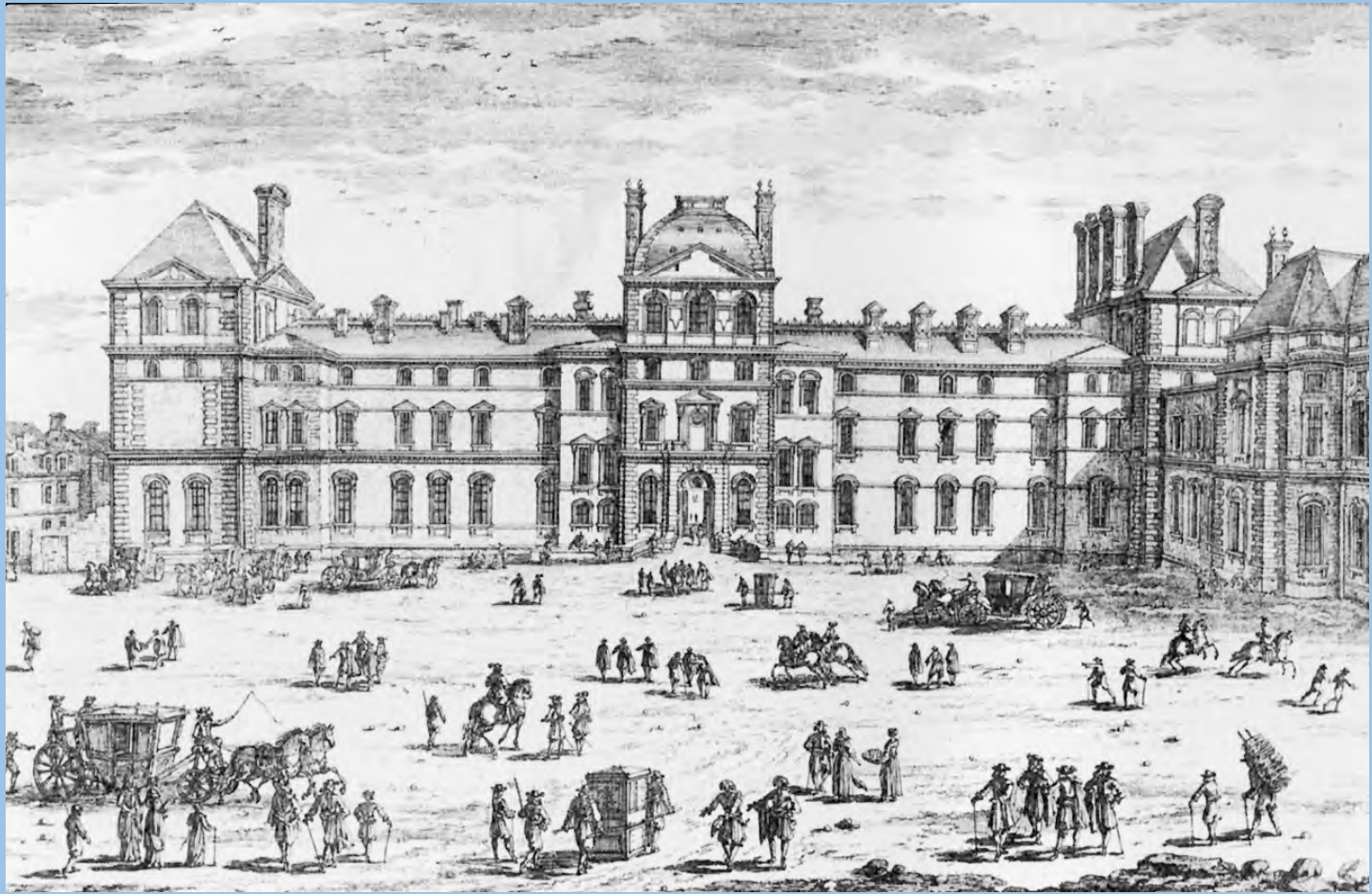


















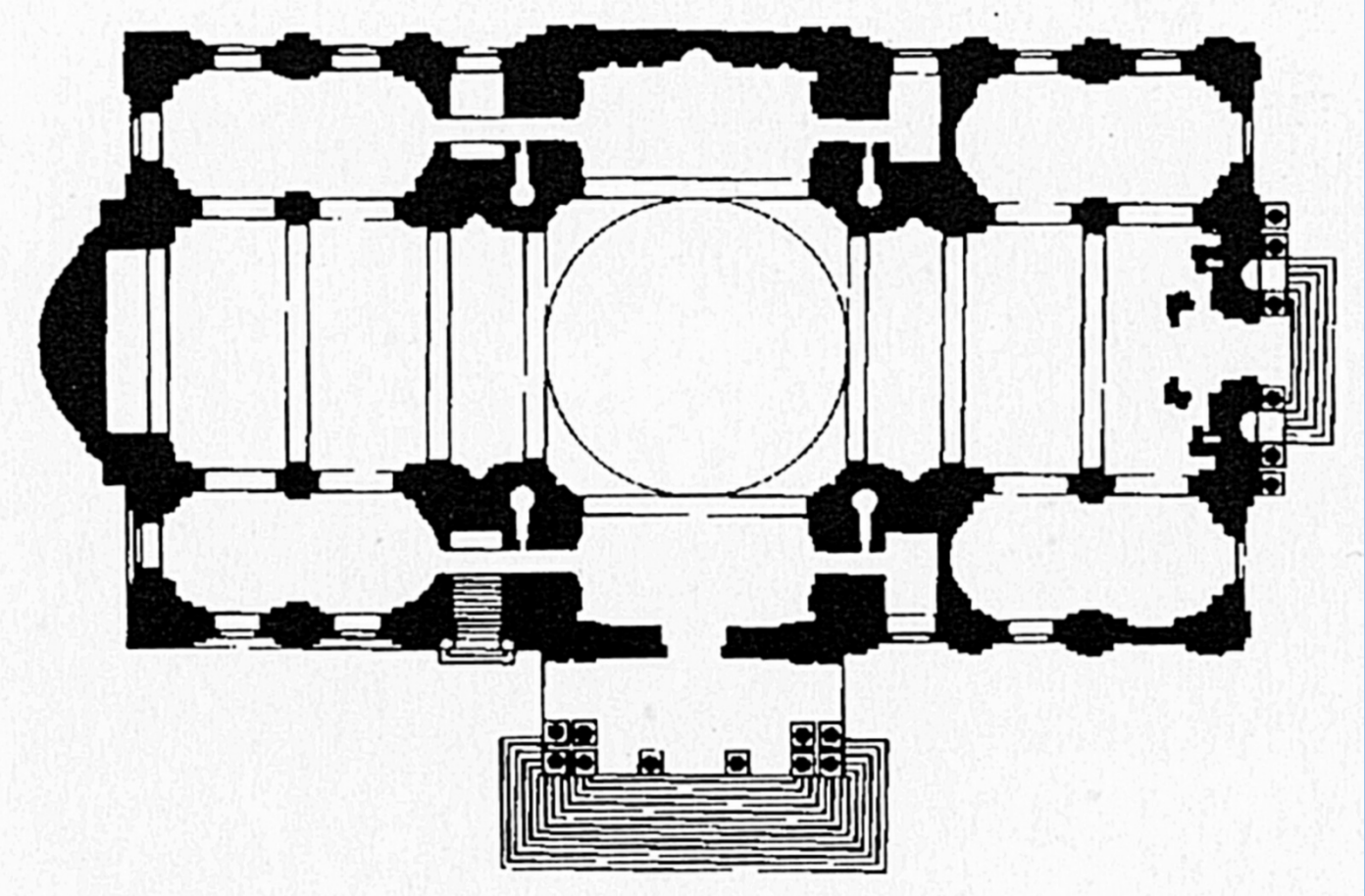
















Palais du CARDINAL en la rue S<sup>t</sup> Honore.  
Pallatium Cardinalis.



ANHANG II: ANORDNUNG DER GALERIE DES HOMMES ILLUSTRÉS

Westwand  
(8, 10-19, 22, 25 von Champagne)

Ostwand  
(1-7, 9 von Vouet; 20 von Champagne)

(JOCH)					
(über Treppentür)	17	[10] LA TRÉMOILLE	K. VON AMBOISE [9]	(über Terrassentür)	
	16	[8] JEANNE D'ARC		Fenster 8	
	15	[11] GASTON DE FOIX	DUNOIS [7]		
	14	[12] BAYARD		Fenster 7	
	13	[13] COSSÉ-BRISSAC	BOUCICAUT [6]		
	12	[14] MONTMORENCY		Fenster 6	
Tür zur Kapelle	11		CLISSON [5]		
	10	[15] FRANÇOIS DE GUISE		Fenster 5	
	9	[16] K. VON LOTHRINGEN	DU GUESCLIN [4]		
	8	[17] MONTLUC		Fenster 4	
	7	[18] BIRON	GAUCHER DE CHÂTILLON [3]		
	6	[19] LESDIGUIÈRES		Fenster 3	
Tür oder Fenster zum Hof	5		MONTFORT [2]		
	4			Fenster 2	
	3	[22] RICHELIEU	SUGER [1]		
	2			Fenster 1	
(über Treppentür)	1	[25] G. D'ORLÉANS	HENRICH IV. [20]	(über Vorzimmertür)	
		[24]	[23]	[21]	
(über Zimmertür?)		ANNA VON ÖSTERREICH	LUDWIG XIII.	MARIE DE MEDICI	(über Zimmertür?)

Südwand (von Champagne)





LE PALAIS ROYAL que le Cardinal de Richelieu, fit bastir pendant son ministere et qu'il laissa en mourant au Roy Louis 13. Ce Louis 14. a present regnant la donna à Monsieur son frere unique lequel y fait sa residence ordinaire.  
Paris, 1691.



A PARIS Chez A. Langlois rue s<sup>t</sup>. Jacques a la Victoire. Avec Privilège du Roy

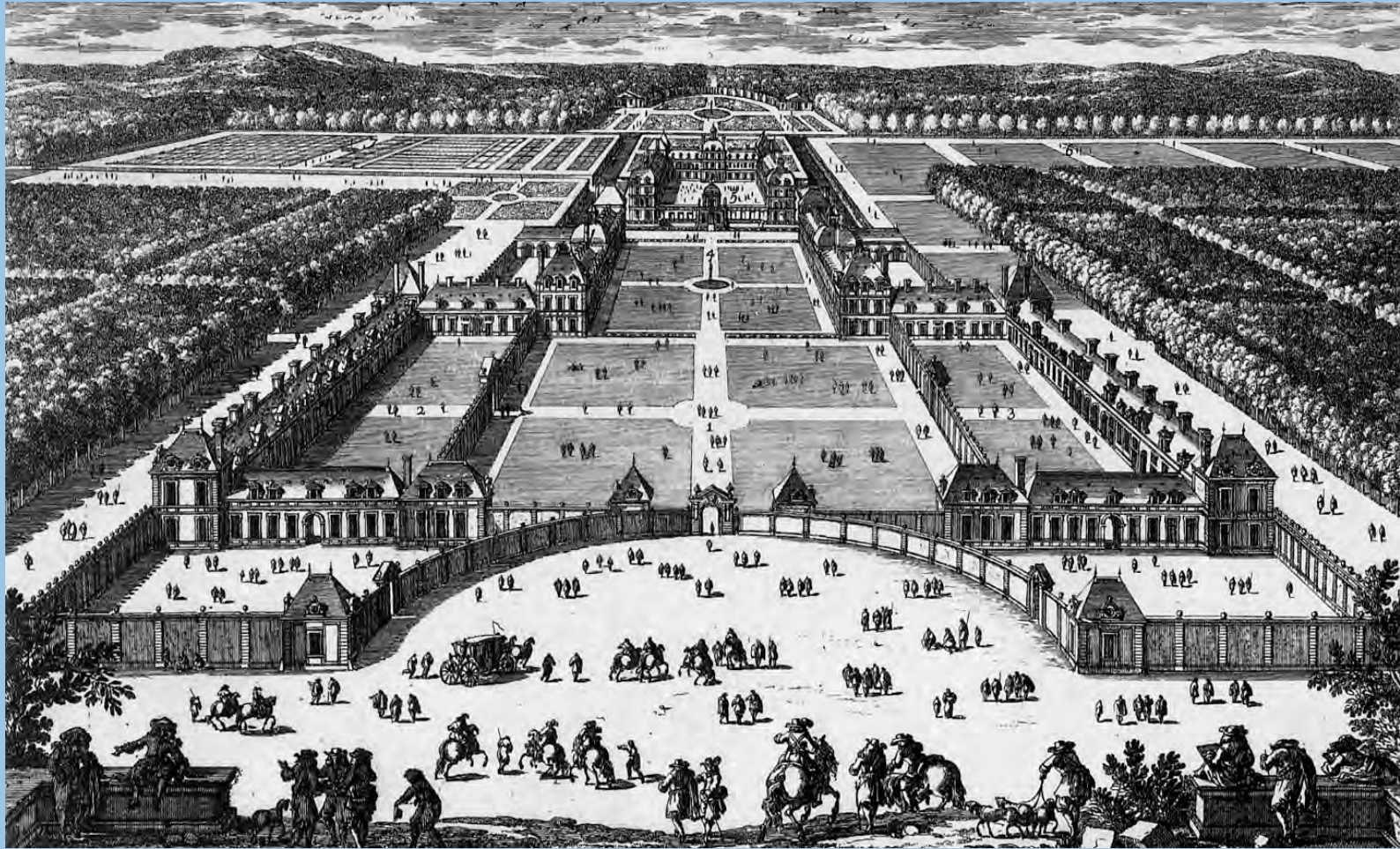


**Christian Beutler**  
**Paris und Versailles**  
(Reclams Kunstführer Band 1)  
**Stuttgart 1970**



*Le Chasteau de Richelieu en Poictou du costé de l'Entrée*

*A Paris chez L'Alaricq - rue S<sup>t</sup> Jacques a la victoire. et aux Colonnes d'Orléans dessiné et gravé par Picoté*

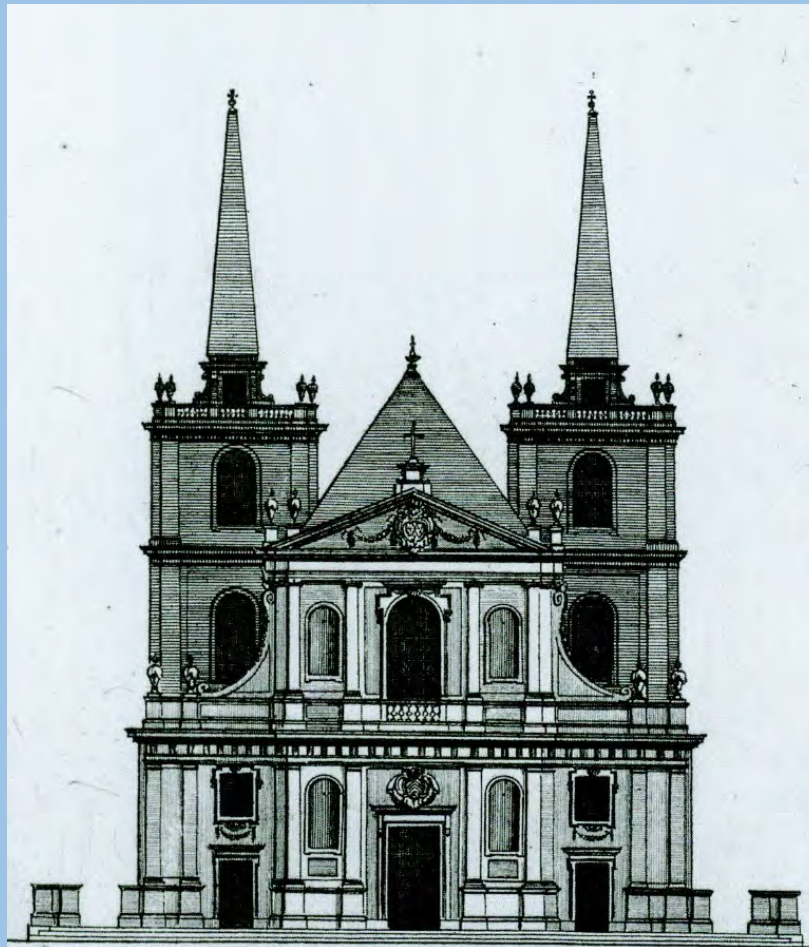












1 2 3 4 5 6 7 8 9 10 Toises

*Elevation du portail de l'Eglise de Richelieu en Poitou.  
Du dessein de Mons<sup>r</sup>. Mercier Architecte.*



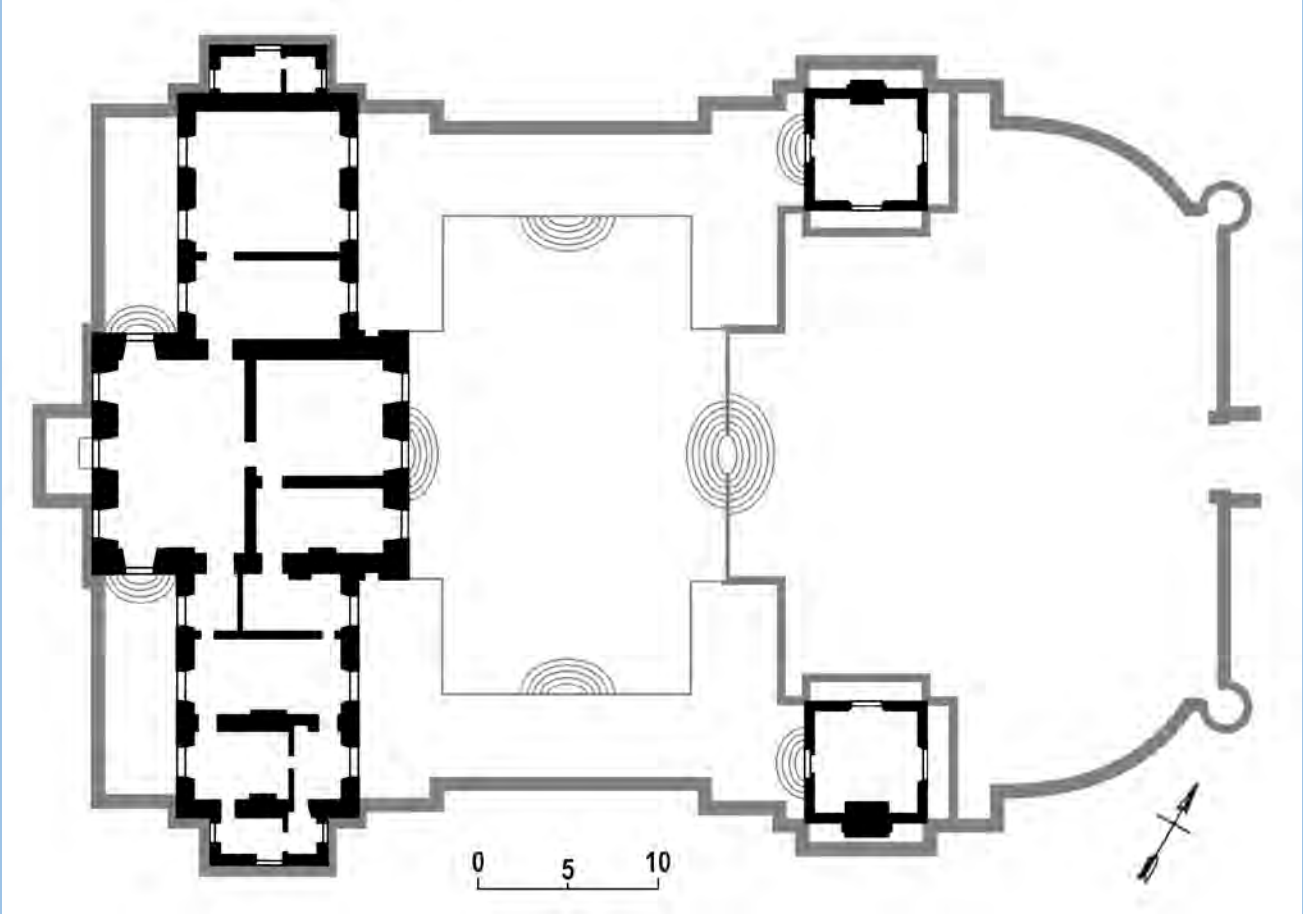


N. Ponce

P. LeClerc sculp. C. P. R.

*Francois Mansart*  
*Architecte du Roy.*









Vue et perspective du Chateau  
DE BASLE-ROY.  
En basse Normandie a 3. lieues de Bayeux  
appartenant a Mons<sup>r</sup>. le Marquis de la Cour.  
1716.



