

Soña agradecido a su amigo Arriola. por el aceno y esmero con q. le salvó la vida en su aguda y peligrosa enfermedad, padecida a fines del año 1819. a los setenta y tres de su edad. Lapintó en 1820.





*Andrago, Thou Chace of of Green,
 What art, that Plague, what and then
 Tyranny of Fancy's Reign:
 Mechanics, Fancy, that can build
 but Labyrinth, & Mazes will.*

*With that, descended, Angels' Mission
 Fild with Secret, fill with Pleasure
 Images of Secret, that would even
 but Drabs of Mercy upon Heaven.*

*Images of Pleasure, that but seem
 About give the shadow side of spleen
 C Family of, the, there, see
 The, Assup, of, Heaven, great, by, the*

*The, would, more, force, of, truth, that, run,
 What, would, be, from, the, starting, sin,
 The, calling, chains, with, Secret, here,
 Bethel, Death, anguishing, with, Respair,*

*See him by thee to Anger sold,
 And cease thy self to care thy gold.*

Retouch'd by the Author: 1761

Printed by W. Kneller & Published according to Act of Parliament June 24. 1723.





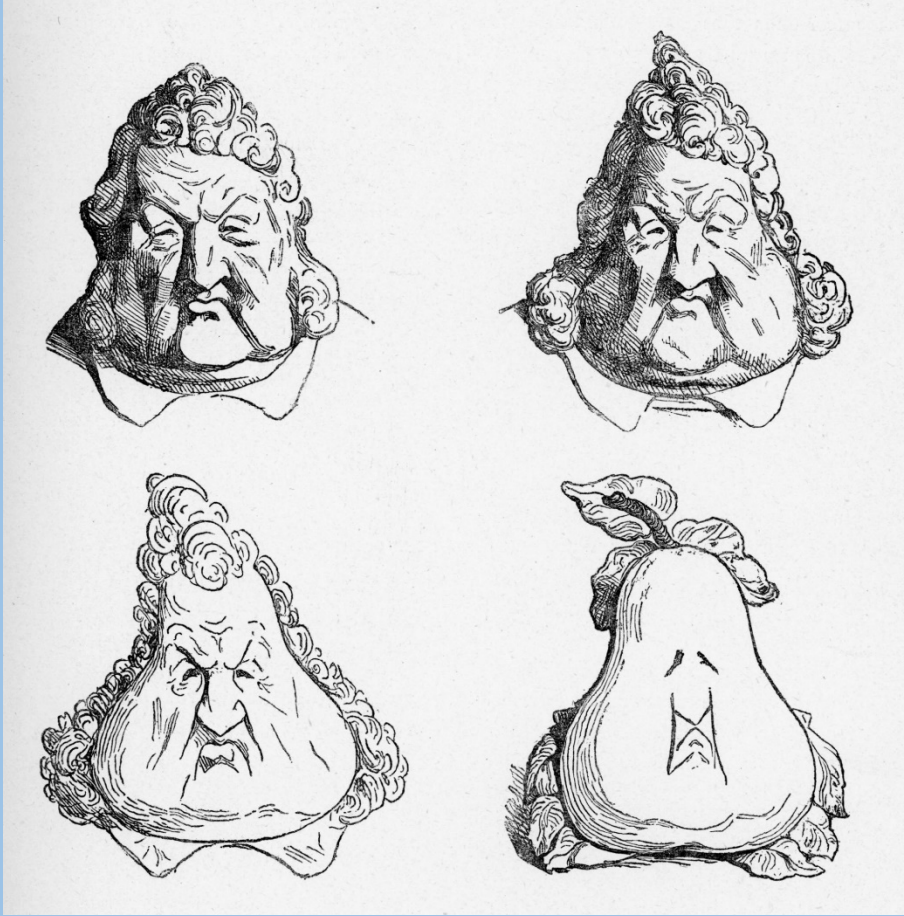














Royet

1870 Banca de Valparaiso - caricatura (Luigi Zuccheri)



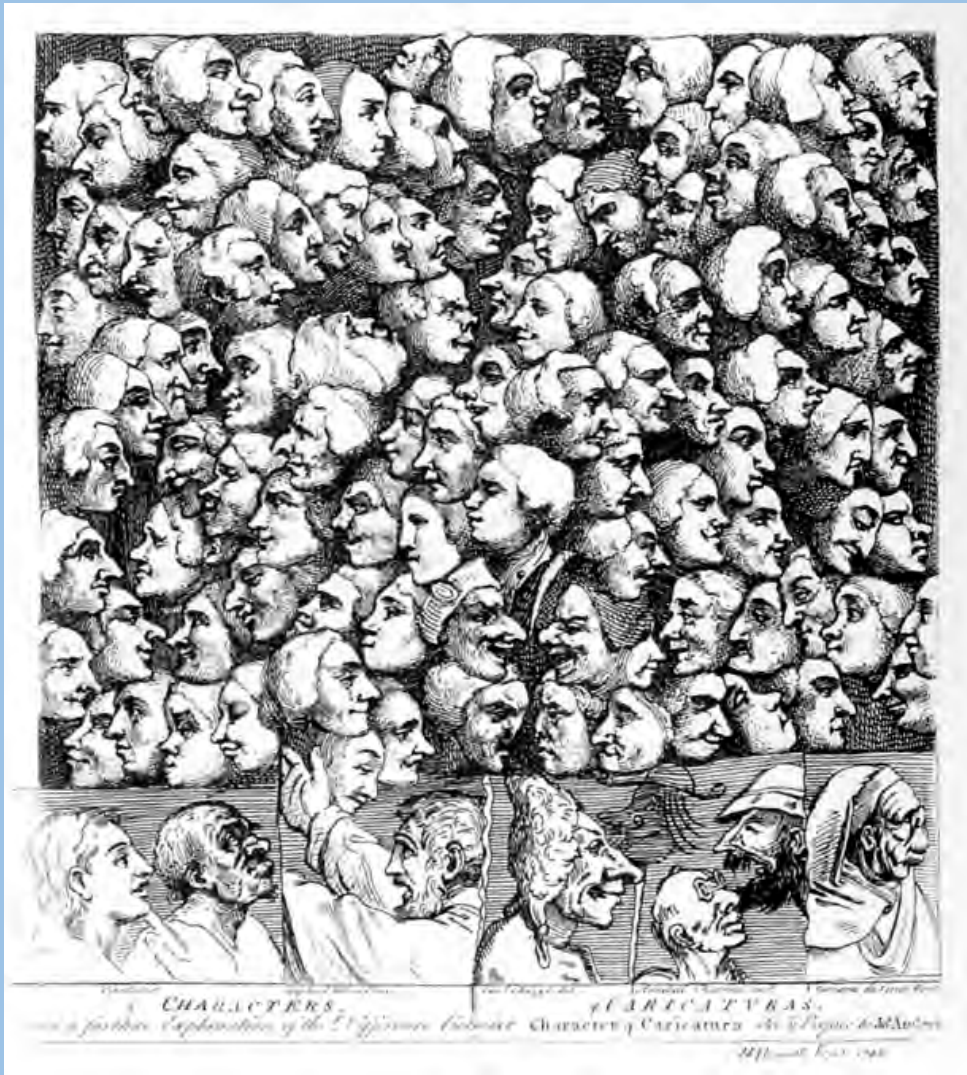






DOUBLURES of Characters; or striking Resemblances in Physiognomy. — If you would know Mens Hearts, look in their Faces. —

I. The Patron of Liberty. Doubtless, <i>The Arch-Friend.</i>	II. A Friend to his Country. Doubtless, <i>Julius selling his Master.</i>	III. Character of High Birth. Doubtless, <i>Silence debauching.</i>	IV. A Fingh'd Patriot. Doubtless, <i>The long Spirit of Hell.</i>	V. A Noble Esquadratorian. Doubtless, <i>Sixteen-string Jack.</i>	VI. Strong Sense. Doubtless, <i>A Bachelor.</i>	VII. A Pillar of the State. Doubtless, <i>A Newmarket Jockey.</i>
---	--	--	--	--	--	--



CHARACTERS

CHARACTERS

and a further Explanation of the Differences between Character and Caricature. As by James Gillray.

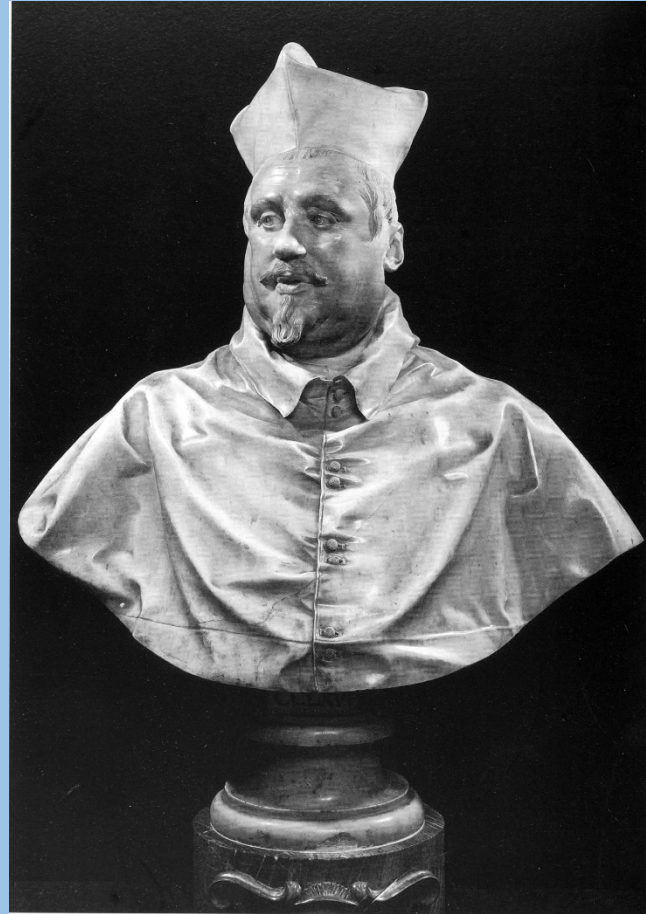
1800



*Some of the Principal Inhabitants of y^e MOON, as they
Were Perfectly Discover'd by a Telescope brought to y^e Greatest
Perfection Since y^e last Eclipse, Exactly Engraved from the
Objects, whereby y^e Curious may Guess at their Religion,
Manners, &c.*

*Some of the Principal Inhabitants of y^e MOON, as they
Were Perfectly Discover'd by a Telescope brought to y^e Greatest
Perfection Since y^e last Eclipse, Exactly Engraved from the
Objects, whereby y^e Curious may Guess at their Religion,
Manners, &c.*

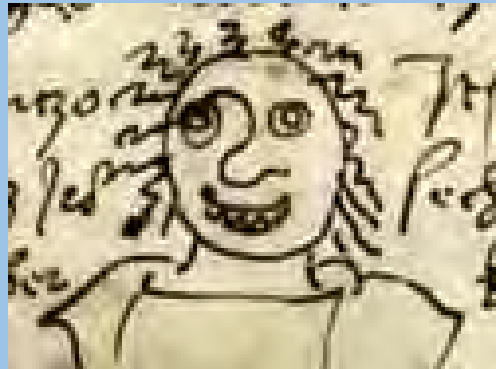






Io già fatto ugozo ronezo steto
 chome fa laana aqacti rlonbardia
 ouer da lero paese ch'essi chesisia
 cha forza luetro apichia sotto lmeto
 Labarda a l'esele ellamemoria sento
 r'ullo l'crignio elpecto fo darpra
 elpemel sopraluiso tuetania
 mel'fa gacciamo u'richo passimeto
 E l'bbi entrati miso nella peccia
 e fo delcul p' ch'otrapeso groppe
 e pass' seza gliochi muono tuano
 D' inazzi misalunga lachoraccia
 ep' pregarsi a dietro sragroppe
 e r'odomi Comardo soriano
 po fallaci e serano
 l'ingie ilindicio ch' lamete porta
 ch' mal si'ra p' carbodama corta
 lamia pictura morte
 di fe ai orma giouanni el mio onore
 no sedo flo'g bo' ne io p'ctore



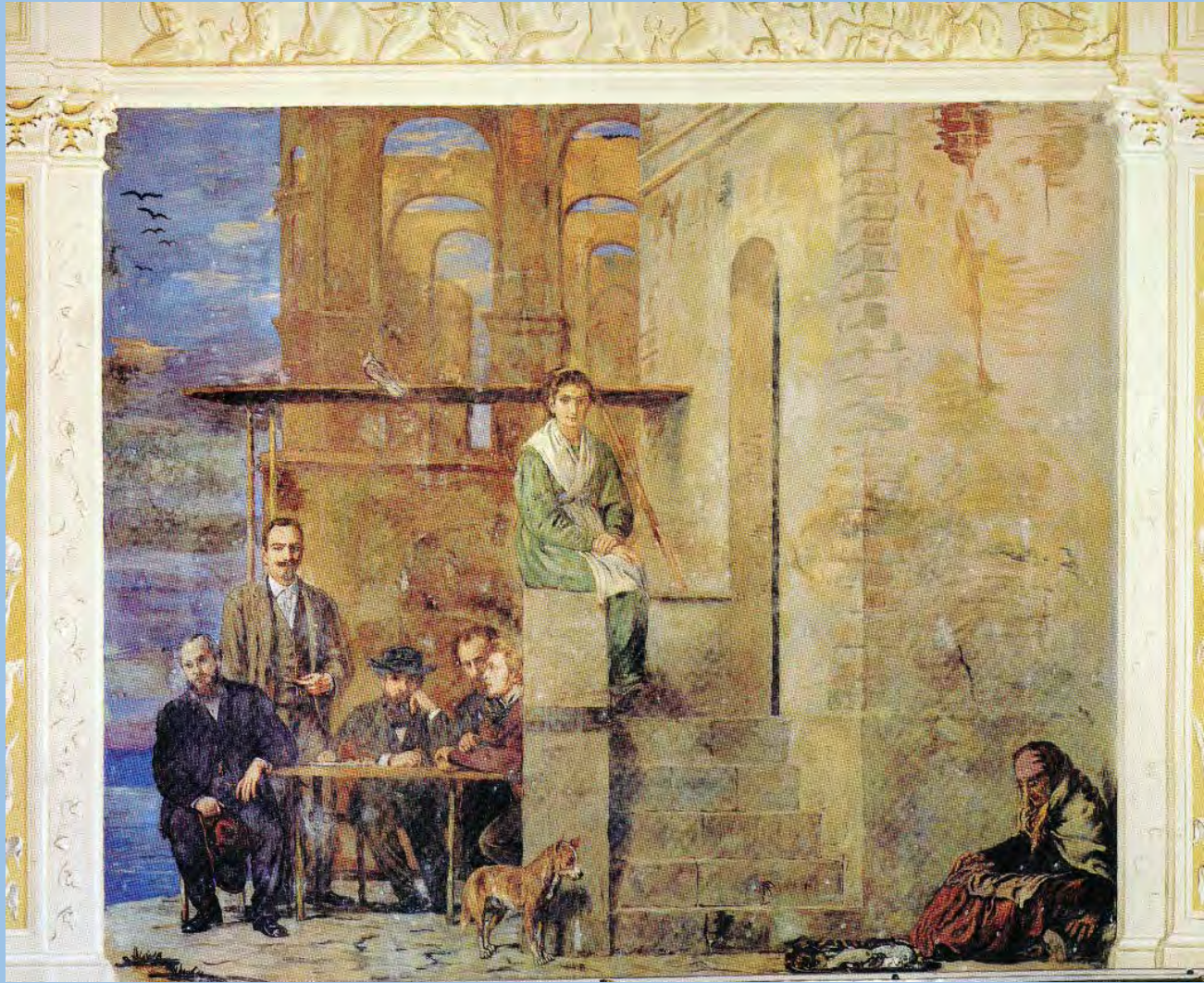




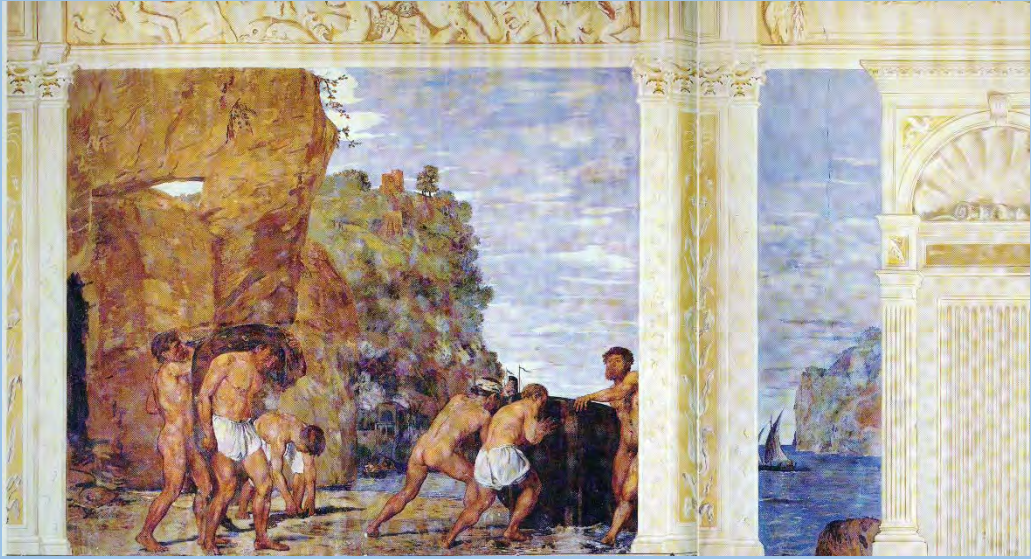




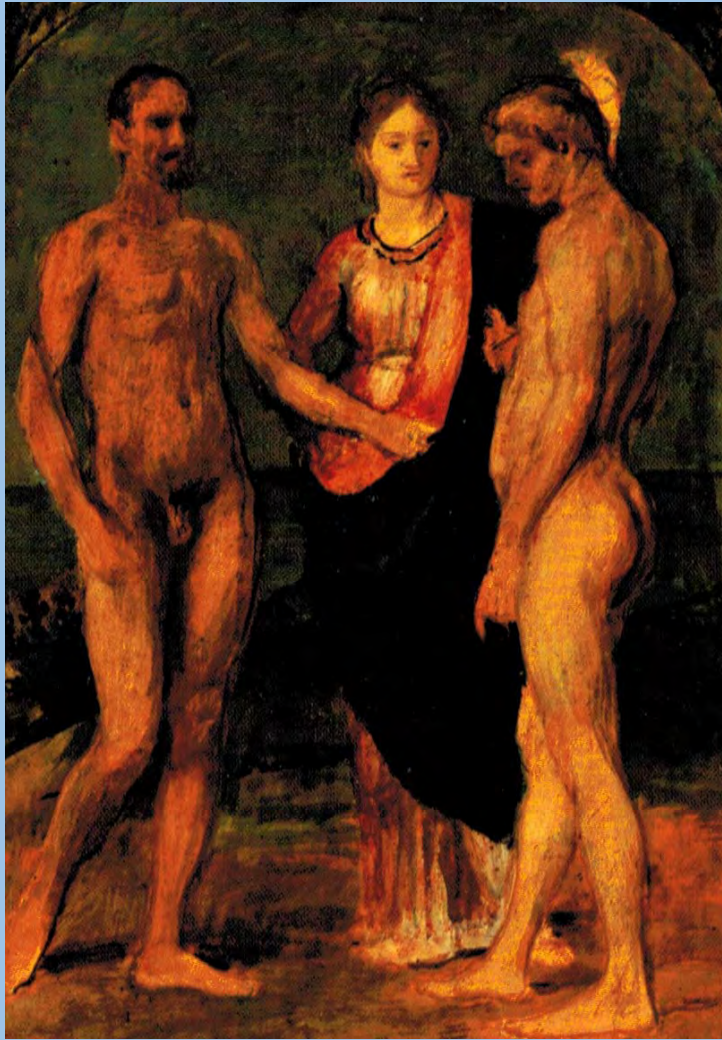






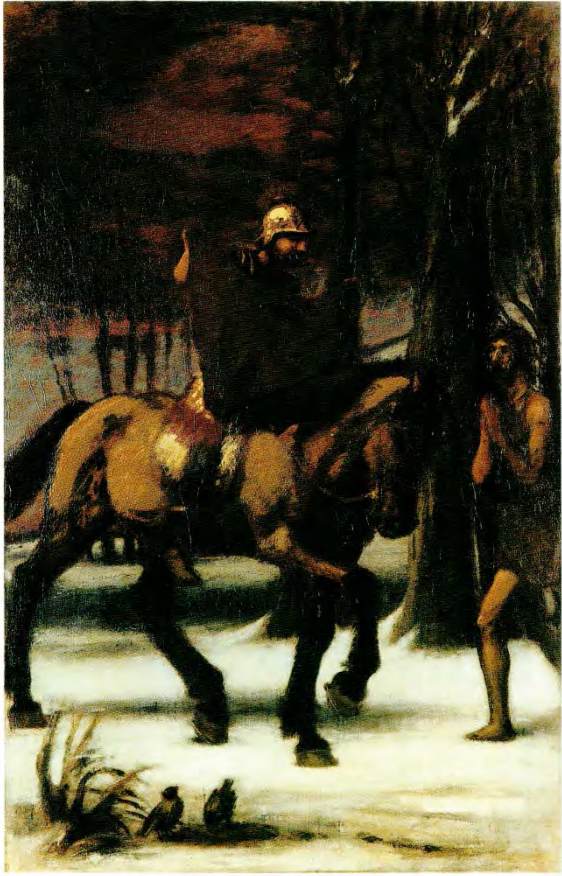












78

